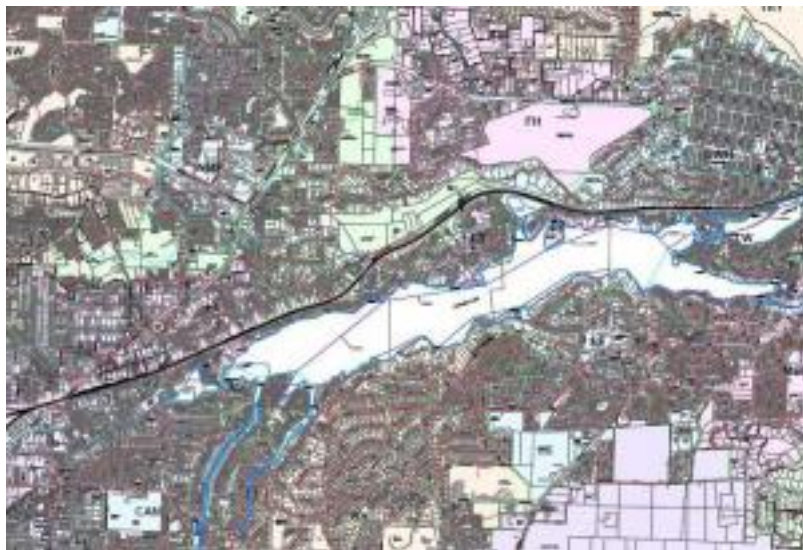


Wastewater Interactive Map



Lake Oswego's Interactive Maps allow the user to navigate the map by zooming in and out, search the map by address, tax lot number, or intersection, turn layers on and off, including aerial photography, click on a property or other features to obtain information, use tools to markup and print a map, use measurement tools, change maps to a selection of pre-set layers, and use quick links to aerial perspective views, street view and the county tax map.

The Interactive Mapping application, LOMap, requires Adobe Flash, available for free at:

<http://get.adobe.com/flashplayer/>

Please click the link below to be taken to the Wastewater Interactive Map.

Maps

[Interactive Wastewater Collection Map](#)

Source URL (retrieved on 05/27/2017 - 4:27pm):

<http://www.ci.oswego.or.us/publicworks/wastewater-interactive-map>