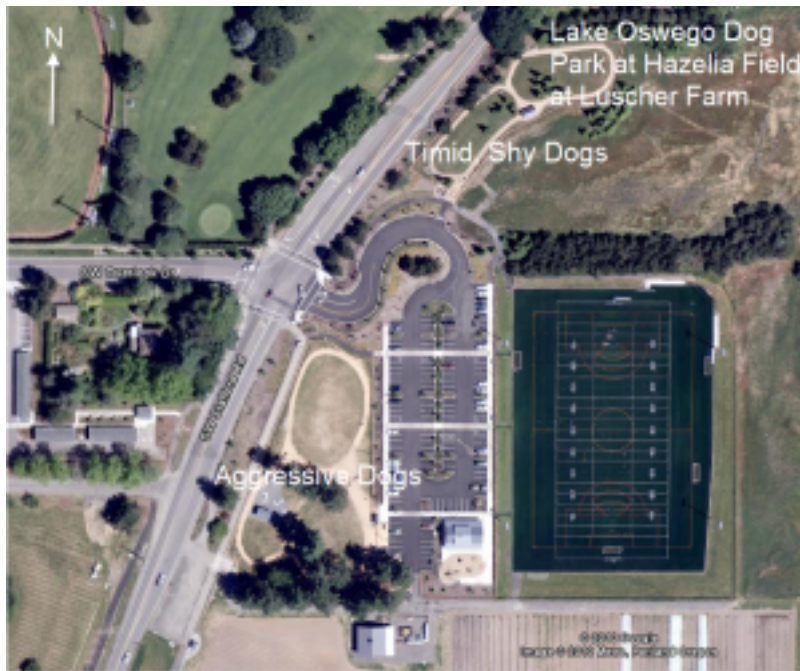


Hazelia Dog Park



The Hazelia Dog Park, located at Hazelia Field at Luscher Farm, 17800 Stafford Road is separated into two areas for our canine friends.

The northern most area is for timid and shy dogs. The larger area fronting the parking lot is for more outgoing dogs. See the attached PDF under Supporting Documents for more information.

Dog Park Hours

The Dog Park is open for play every day of the year from 6 a.m. - 10 p.m. daily.

Please Pick Up After Your Pet

Poo Bags are provided for picking up after your pet. Please use the bags and place them in the designated garbage receptacles.

•

Click any thumbnail image to view a slideshow

Hazelia Dog Park

Published on City of Lake Oswego Oregon Official Website (<http://www.ci.oswego.or.us>)



Supporting Documents

 [Dog Park Info](#)

Directions

Hazelia Off Leash Area for Dogs Park 17800 Stafford Road
West Linn, OR 97068
See map: [Google Maps](#)

Source URL (retrieved on 10/23/2017 - 10:54pm): <http://www.ci.oswego.or.us/parksrec/hazelia-dog-park>