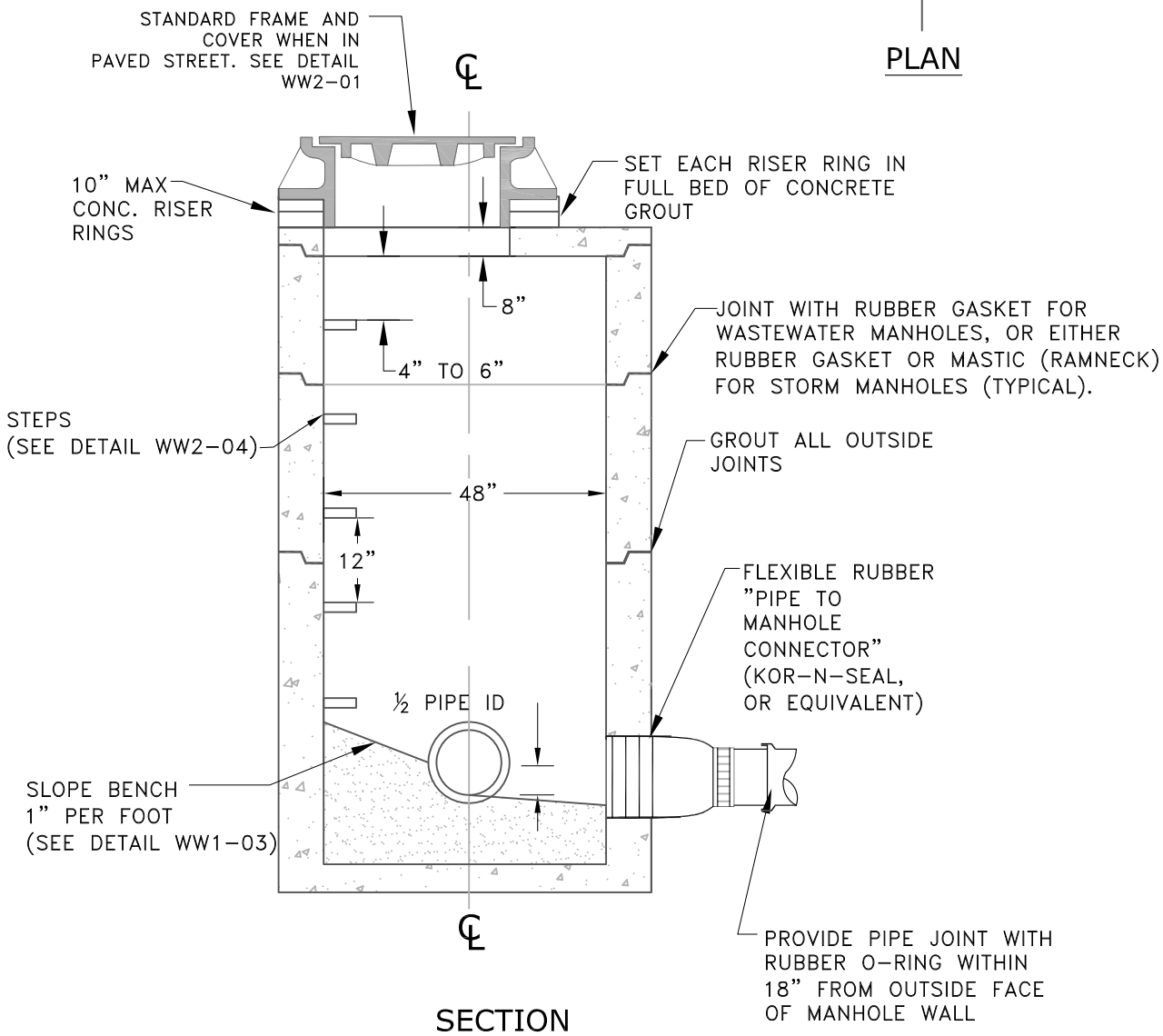
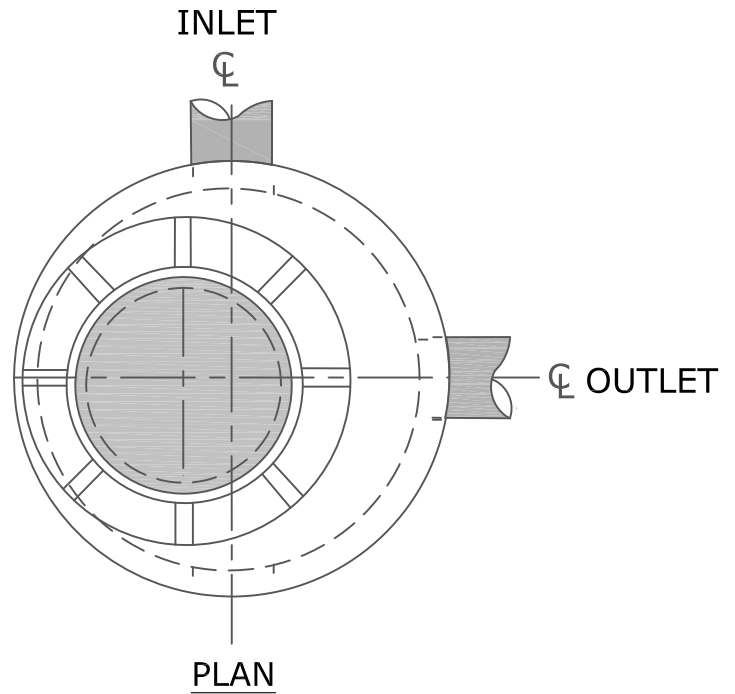


**NOTES:**

- 1) ALL PRECAST SECTIONS SHALL CONFORM TO THE REQUIREMENTS OF ASTM-C-478.
- 2) ALL POURED IN PLACE CONCRETE SHALL HAVE A 28 DAY STRENGTH OF 3,000 P.S.I. .
- 3) FOR LOCATIONS OUTSIDE OF PAVED, OR OTHER HARD SURFACED AREAS, MANHOLE RIM ELEVATION SHALL BE BETWEEN 6" AND 12" ABOVE ADJACENT FINISHED GROUND ELEVATION.
- 4) ELIMINATE STEPS AND USE CONCENTRIC OPENING FOR FLATTOP MANHOLE WHEN RIM TO PIPE CROWN HEIGHT IS 4 FEET OR LESS.
- 5) FLATTOP MANHOLE REQUIRED WHEN THERE IS LESS THAN 6 FEET FROM PIPE INVERT TO TOP OF MANHOLE.
- 6) SEE L.O. SPECIAL PROVISIONS FOR TRACER WIRE DETAILS.



City of Lake Oswego  
Engineering Division

Erica Rooney, P.E. City Engineer

**FLATTOP MANHOLE**

**WW1-01**

EFFECTIVE DATE: JANUARY 1, 2018

NOT TO SCALE

DRAWING NUMBER