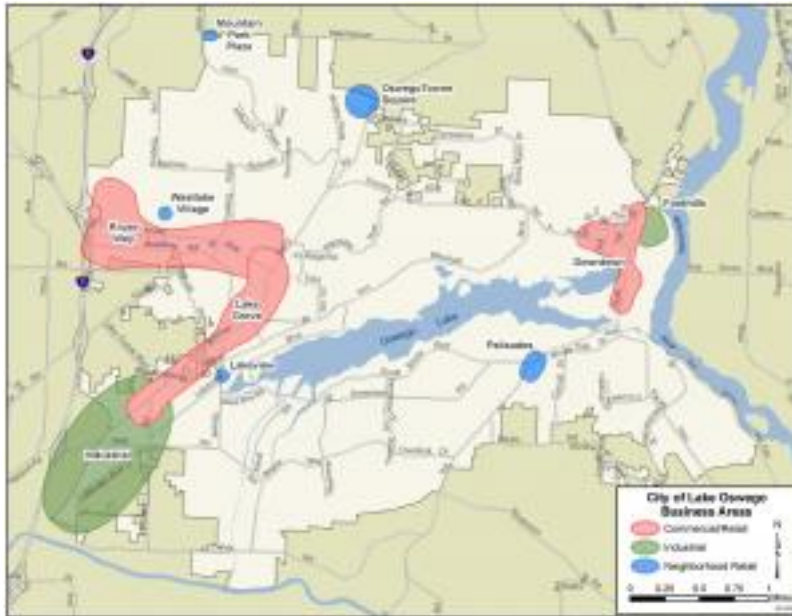


Business Districts Overview



Lake Oswego’s businesses are clustered in a number of districts throughout the city, each with a distinctive character and mix of commercial uses. They include neighborhood retail areas, industrial zones, large shopping and office districts in downtown and Lake Grove, and a concentration of Class-A office in the Kruse Way/Meadows Road area.

[Downtown Lake Oswego](#)

[Lake Grove](#)

[Kruse Way](#)

[Mountain Park](#)

[Palisades](#)

[Industrial Zones](#)

Supporting Documents

 [Lake Oswego Business Districts Map](#)

 [Downtown Parking Map](#)

Source URL (retrieved on 12/14/2017 - 2:47pm):

<https://www.ci.oswego.or.us/business/business-districts-overview>

Business Districts Overview

Published on City of Lake Oswego Oregon Official Website (<https://www.ci.oswego.or.us>)
