

LAKE OSWEGO PATHWAYS PROJECT

Spring 2025 | Meadowlark Lane, Tree Top Lane, Carman Drive, and Pilkington Road



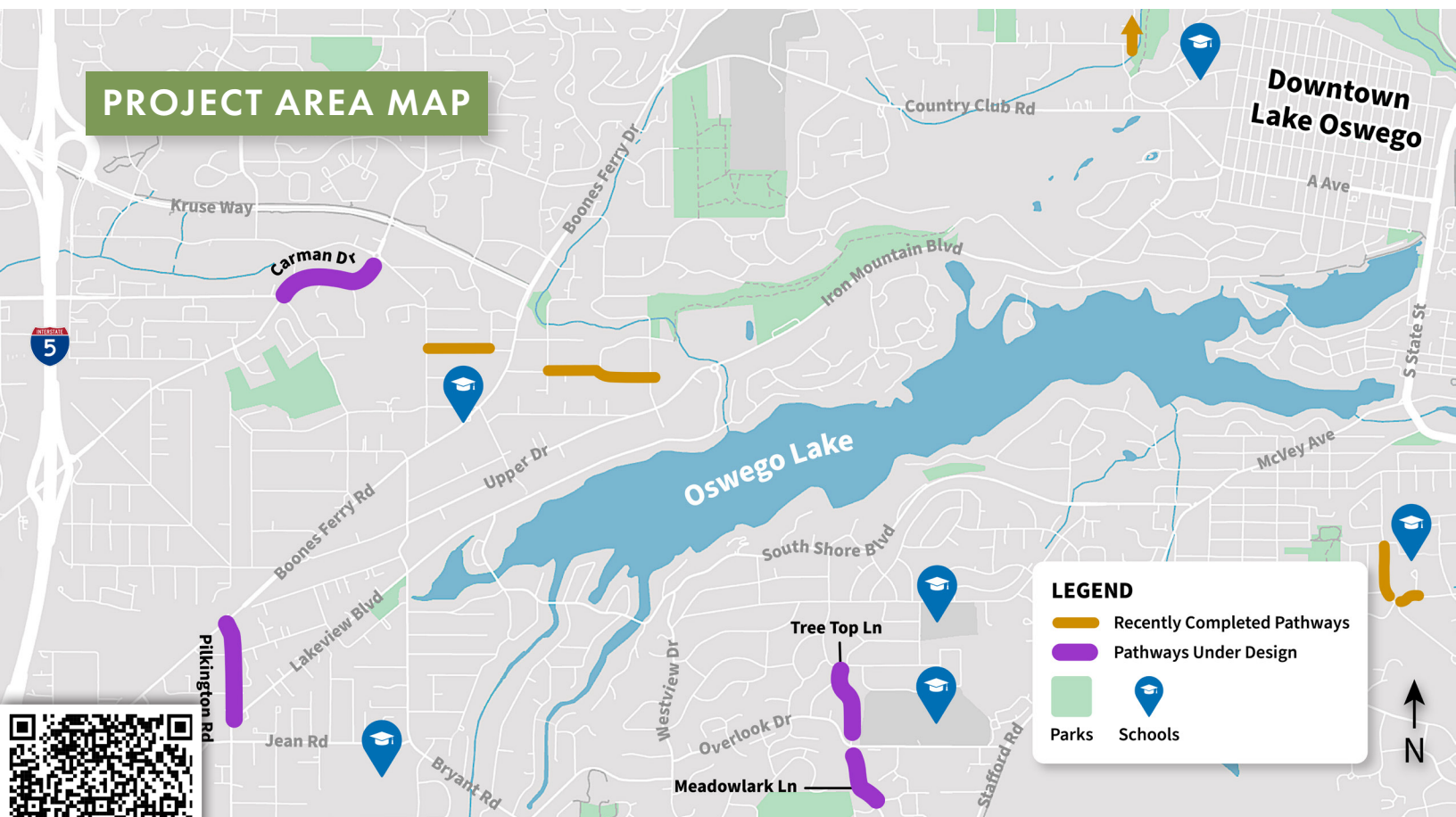
The City of Lake Oswego is creating safe and accessible pathways for all. In alignment with the City's Transportation System Plan and Capital Improvement Plan, in 2022 the City Council approved an increase to the Street Maintenance Fee to fund the Pathways Program, which connects neighborhoods with local area schools, businesses, parks, and other community destinations.

In 2024, the City started design to construct new pedestrian facilities along segments of **Meadowlark Lane, Tree Top Lane, Carman Drive, and Pilkington Road**. Throughout the design process, the City gathered community input on each pathway through open houses, one-on-one meetings and surveys to inform the final designs.

Shaped by feedback from the community, available roadway space, and technical analysis, designs are now complete and construction is expected to begin summer/fall 2025.

PROJECT TIMELINE

- **Spring 2024**
 - Design Phase Began
- **Summer 2024**
 - Open House #1 and Survey
- **Summer 2024 to Spring 2025**
 - One-on-one Meetings
 - Presentations to Transportation Advisory Board
- **Spring 2025**
 - ★ Final Design Open House (**you are here**)
- **Summer/Fall 2025**
 - Construction Expected to Begin



View the final design recommendation and share your feedback by April 30.

IMPROVEMENTS



4,000+
New feet of sidewalk



13
New or improved
ADA-compliant curb ramps



11
New or improved
crossings



9
New street lights

Construction expected to
begin **Summer/Fall 2025**



For more information:

- Visit lakeoswego.city/pathways-program
- Call **503-635-0261**
- Email hshipton@lakeoswego.city or kkerklaan@lakeoswego.city

The City of Lake Oswego fosters a welcoming and inclusive community where all people have the opportunity to thrive and have equitable access to City services. For Americans with Disabilities Act or Civil Rights Title VI accommodations, translation/interpretation services, or more information call **503-635-0270** or **Oregon Relay Service 7-1-1**.



lakeoswego.city/pathways-program



MEADOWLARK LANE

The final design adds 920 feet of sidewalk, one new curb ramp compliant with the Americans with Disabilities Act (ADA), and one new crossing, while only removing two parking spaces.



TREE TOP LANE

The final design maintains all existing trees while adding 1,300 feet of sidewalk, five new or improved ADA-compliant curb ramps, and four new or improved crossings.



CARMAN DRIVE

The final design includes 1,440 feet of new sidewalk, four ADA-compliant curb ramps, three new or improved crossings, a new bike lane, and new street lighting along the project limits.



PILKINGTON ROAD

The final design adds four new parking spaces near commercial buildings from Rosewood Street toward Boones Ferry Road, while adding 475 feet of sidewalk, three ADA-compliant curb ramps, and three new or improved crossings.