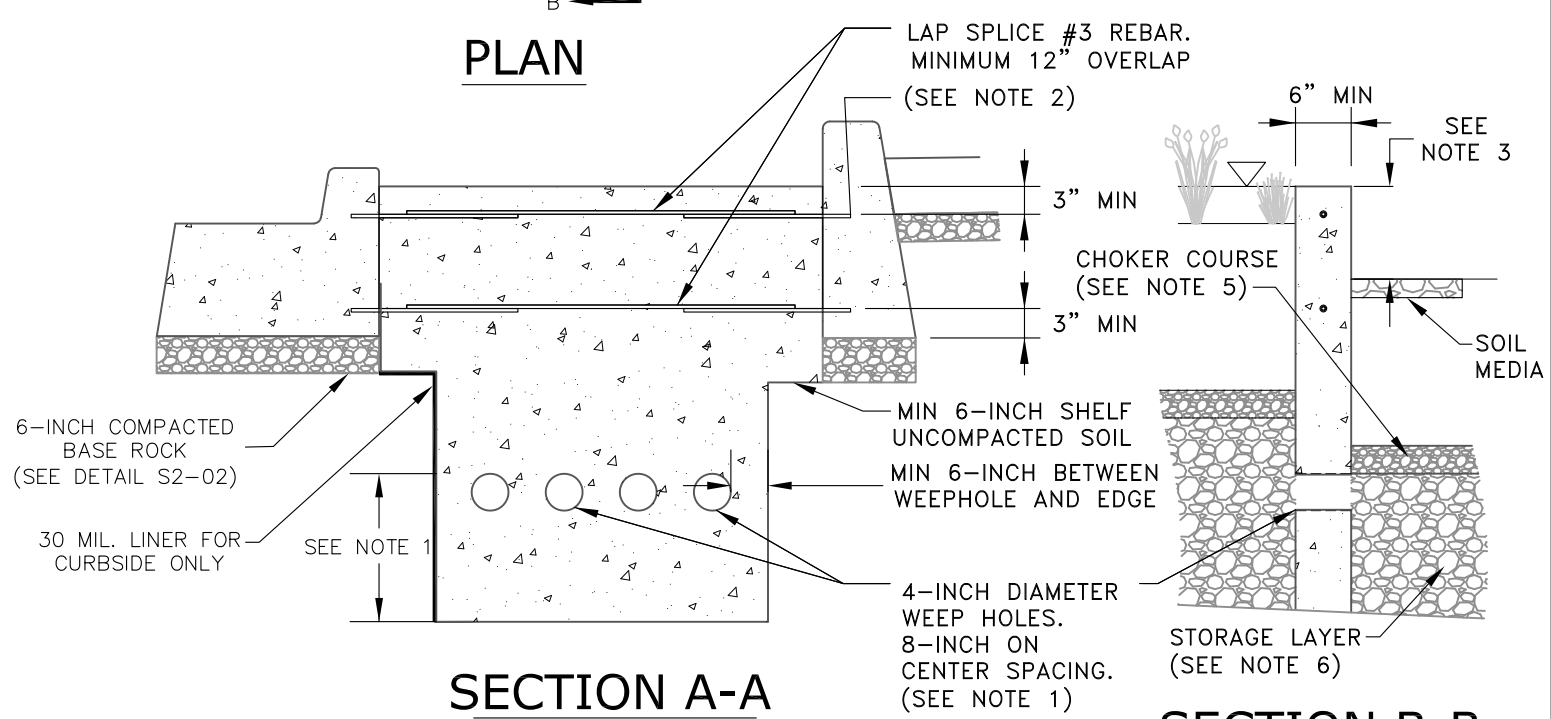


PLAN



SECTION A-A

SECTION B-B

NOTES

1. TOP OF THE WEEPHOLE MUST BE AT THE TOP ELEVATION OF THE STORAGE LAYER IN THE NEXT CELL. BOTTOM OF WEIR MUST BE 6 INCHES DEEPER THAN THE STORAGE LAYER DEPTH TO PREVENT SHORT CIRCUITING.
2. EMBED REBAR A MIN OF 3 INCHES INTO CURB AND PLANTER WALL.
3. WEIR MUST PROVIDE A MIN OF 2-INCH FREEBOARD.
4. DISSIPATION PAD DIMENSIONS: 1.5-FT X FACILITY WIDTH. INSET CONCRETE PAD 4 INCHES INTO SOIL MEDIA. CAN ALSO USE CLEAN CRUSHED ROCK (1- 1/2" - 3/4") THAT CONFORMS WITH ODOT SPECIFICATION 00430.11, IS INSET 6 INCHES, AND UNDERLAIN WITH HIGH DENSITY COCONUT OR JUTE MATTING. CONCRETE PAD WITH 1-INCH LIP REQUIRED AT INLETS (SEE CURB INLET DETAIL SD9-02).
5. CHOKER COURSE (3-INCH DEPTH) MUST BE CRUSHED ROCK (3/4" TO 1/2") MEETING ODOT SPECIFICATION 00430.11.
6. STORAGE LAYER(1 TO 2-FT DEPTH) MUST BE CLEAN OPEN-GRADED CLEAN ROCK (1- 1/2" TO 3/4") THAT COMPLIES WITH ODOT SPECIFICATION 00430.11.

ADAPTED FROM CLEAN WATER SERVICES

	<p>City of Lake Oswego Engineering Division</p> <p>Erica Rooney, P.E. City Engineer</p>	<p>CONCRETE WEIR</p> <p>EFFECTIVE DATE: SEPTEMBER 14, 2020 NOT TO SCALE</p>	<p>SD9-01</p> <p>DRAWING NUMBER</p>
--	---	---	-------------------------------------