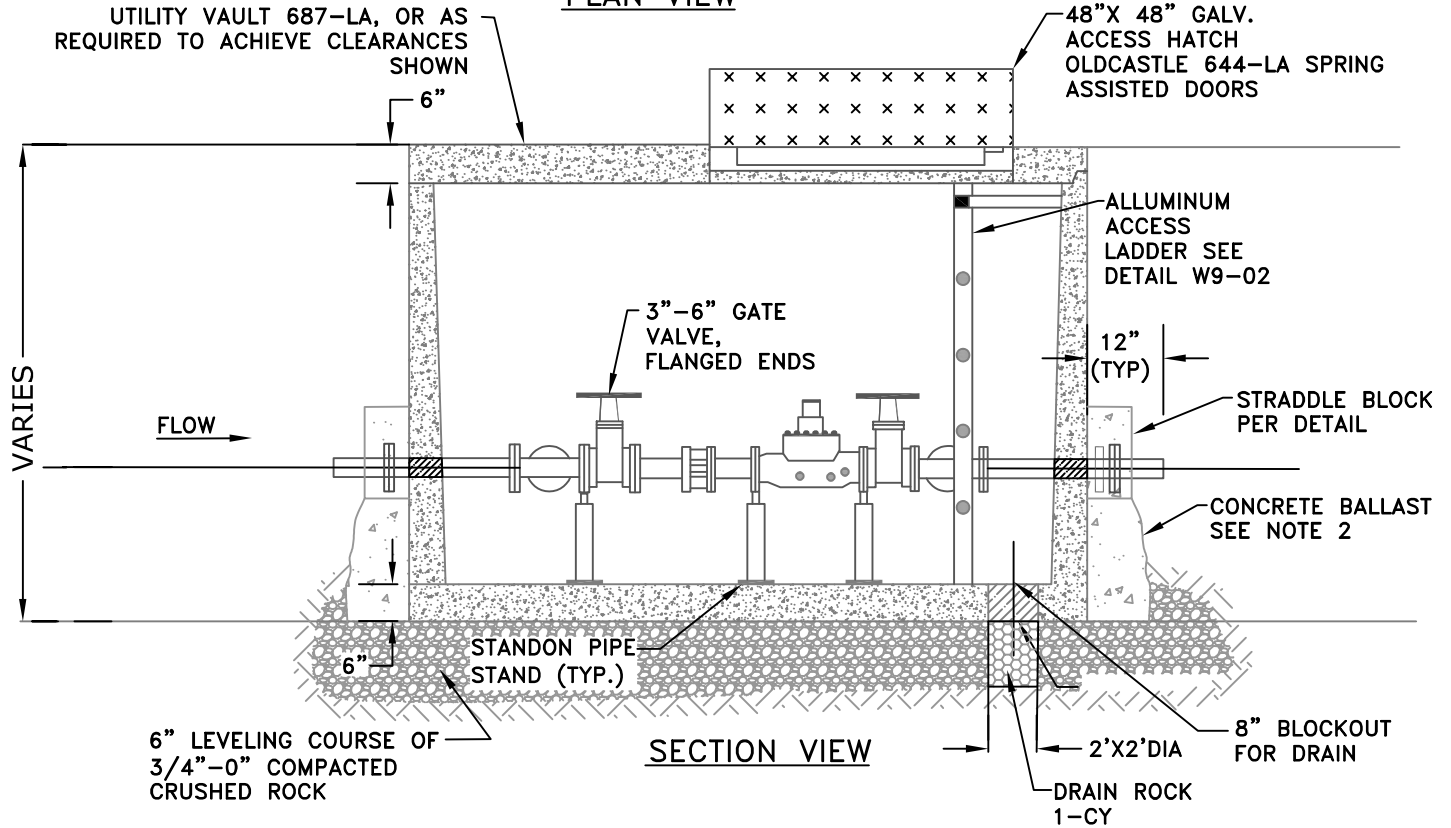


PLAN VIEW



NOTES:

1. CONTRACTOR TO SEAL VAULT PENETRATIONS WITH MODULAR ELASTOMERIC WALL SEALS.
2. CONTRACTOR TO INSTALL CONCRETE BALLAST 3 CU YD MIN. AROUND BASE OF VAULT IN AREAS WHERE FLOODING OR HIGH GROUND WATER EXISTS.
3. ALL MATERIALS SHALL BE NAMED OR EQUAL. SUBMIT ALTERNATIVES FOR APPROVAL.



City of Lake Oswego
Engineering Division
Erica Rooney, P.E. City Engineer

**3" - 6" METER
INSTALLATION (BY CONTRACTOR)**

W9-01

EFFECTIVE DATE: APRIL 2023

NOT TO SCALE

DRAWING NUMBER