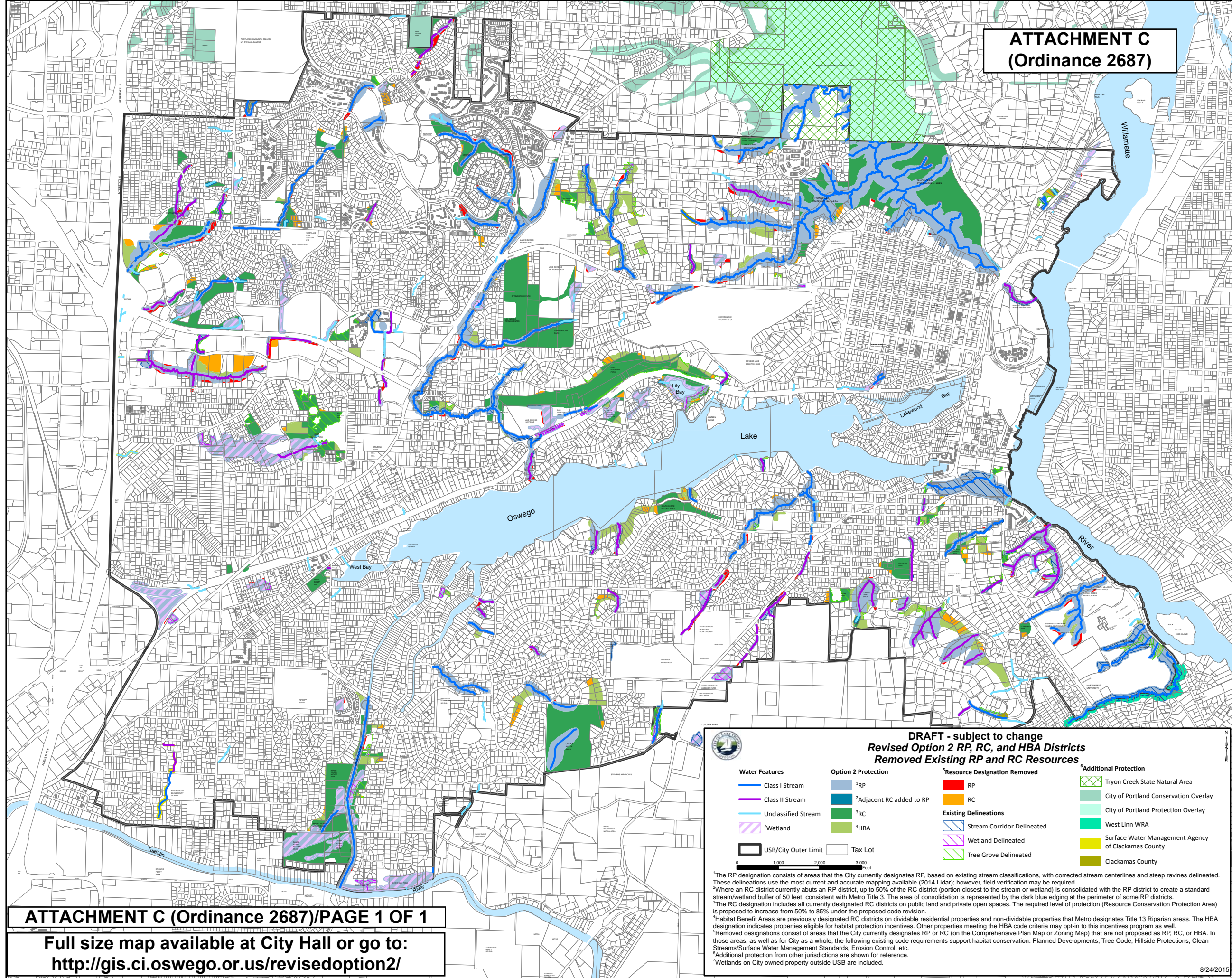


**ATTACHMENT C  
(Ordinance 2687)**



**DRAFT - subject to change**  
**Revised Option 2 RP, RC, and HBA Districts**  
**Removed Existing RP and RC Resources**

<b>Water Features</b>	<b>Option 2 Protection</b>	<b>Resource Designation Removed</b>	<b>Additional Protection</b>
Class I Stream	<sup>1</sup> RP	RP	Tryon Creek State Natural Area
Class II Stream	<sup>2</sup> Adjacent RC added to RP	RC	City of Portland Conservation Overlay
Unclassified Stream	<sup>3</sup> RC	<b>Existing Delineations</b>	City of Portland Protection Overlay
<sup>4</sup> Wetland	<sup>4</sup> HBA	Stream Corridor Delineated	West Linn WRA
USB/City Outer Limit	Tax Lot	Wetland Delineated	Surface Water Management Agency of Clackamas County
		Tree Grove Delineated	Clackamas County

0 1,000 2,000 3,000 Feet

<sup>1</sup>The RP designation consists of areas that the City currently designates RP, based on existing stream classifications, with corrected stream centerlines and steep ravines delineated. These delineations use the most current and accurate mapping available (2014 Lidar); however, field verification may be required.  
<sup>2</sup>Where an RC district currently abuts an RP district, up to 50% of the RC district (portion closest to the stream or wetland) is consolidated with the RP district to create a standard stream/wetland buffer of 50 feet, consistent with Metro Title 3. The area of consolidation is represented by the dark blue edging at the perimeter of some RP districts.  
<sup>3</sup>The RC designation includes all currently designated RC districts on public land and private open spaces. The required level of protection (Resource Conservation Protection Area) is proposed to increase from 50% to 85% under the proposed code revision.  
<sup>4</sup>Habitat Benefit Areas are previously designated RC districts on dividable residential properties and non-dividable properties that Metro designates Title 13 Riparian areas. The HBA designation indicates properties eligible for habitat protection incentives. Other properties meeting the HBA code criteria may opt-in to this incentives program as well.  
<sup>5</sup>Removed designations consist of areas that the City currently designates RP or RC (on the Comprehensive Plan Map or Zoning Map) that are not proposed as RP, RC, or HBA. In those areas, as well as for City as a whole, the following existing code requirements support habitat conservation: Planned Developments, Tree Code, Hillside Protections, Clean Streams/Surface Water Management Standards, Erosion Control, etc.  
<sup>6</sup>Additional protection from other jurisdictions are shown for reference.  
<sup>7</sup>Wetlands on City owned property outside USB are included.

**ATTACHMENT C (Ordinance 2687)/PAGE 1 OF 1**

Full size map available at City Hall or go to:  
<http://gis.ci.oswego.or.us/revisedoption2/>