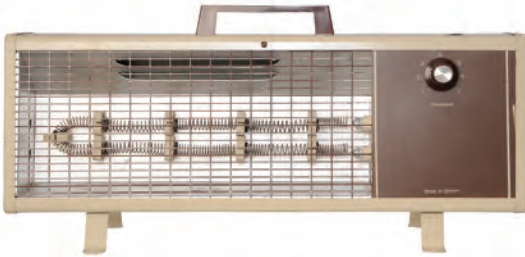




Maintain woodstoves, fireplaces, and chimneys by having them cleaned and inspected annually by a qualified professional.

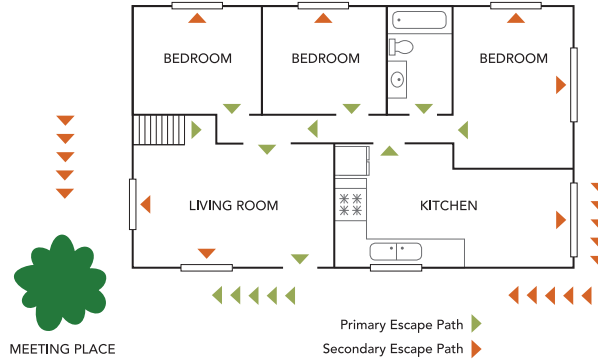
Keep yourself or anything that will burn at least three feet from heaters.



Plug space heater cords directly into an electrical outlet and never into an extension cord or power strip.



## HAVE A FIRE ESCAPE PLAN & PRACTICE IT!



FOR LIFE-THREATENING EMERGENCIES, CALL 911



OREGON STATE POLICE  
OFFICE OF STATE FIRE MARSHAL

503-934-8266 or 503-934-8366

[www.oregon.gov/OSP/SFM](http://www.oregon.gov/OSP/SFM)

# HOME HEATING SAFETY



Safety information from the Oregon Office of State Fire Marshal, the Oregon Life Safety Team, and your local fire agency

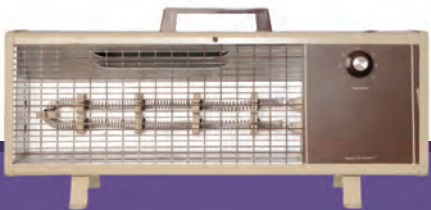
# Home Heating Safety

## GENERAL

- All heaters need space. Keep things that can burn such as paper, furniture, bedding, or curtains, at least three feet from heating equipment.
- Have a three-foot “kid-free-zone” around open fires and space heaters.
- Use heating equipment that has the label of a recognized testing laboratory.
- Never use the oven or stove burners for home heating.

## SPACE HEATERS

- Use a portable space heater with tip-over protection.
- Turn off and unplug heaters when leaving home, or going to bed.
- Inspect your heater for cracked or damaged cords, broken plugs, or loose connections.
- Plug heater power cords directly into an electrical outlet. Do not use extension cords or power strips.
- Place the space heater on a solid, flat surface, and keep cords away from high traffic areas and doorways.



# Fireplaces and Woodstoves

- Burn dry, seasoned wood. It creates less creosote build-up in the chimney.
- Have your woodstove or fireplace flue cleaned and inspected annually by a qualified professional.
- Use only newspaper and kindling or fire starters to start a fire.
- Always use a fireplace screen. It keeps hot embers and logs from escaping and igniting the surrounding area.
- Dispose of ashes in a tightly covered metal container, outside and away from combustibles.
- Keep the doors of your wood stove closed unless loading or stoking the fire.



**On average, each year in Oregon there are 590 home heating-related fires that cause over \$8 million in damage and kill or injure 16 people.\***

# Smoke & Carbon Monoxide Alarms

- Make sure you have at least one smoke alarm on every level of your home, outside each sleeping area (in hallways) and in each bedroom.
- Replace smoke alarms every 10 years.
- Install carbon monoxide alarms in each bedroom or within 15 feet outside each sleeping area, according to manufacturer’s instructions.
- Replace carbon monoxide alarms every five years.
- Test your alarms by pushing the test button at least once a month.
- Clean alarms once a month by blowing out with compressed air or vacuuming.

## CARBON MONOXIDE

Make sure all fuel-burning equipment is vented to the outside to avoid carbon monoxide (CO) poisoning. Carbon monoxide poisoning can cause illness and even death. Make sure the venting is clear and unobstructed.



\*DATA PROVIDED BY OSFM INCIDENT REPORTING SYSTEM