

The tables reflect participant responses and is graphically represented by the bar graph.

Pages 1-4: Forum ice-breaker questions

Pages 5-15: What would you like to see?

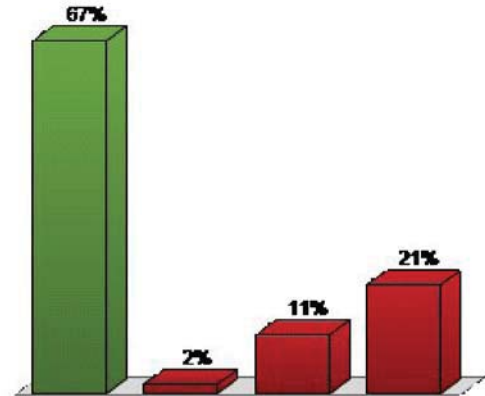
Pages 16-26: What would you not like to see?

Pages 26-29: Forum feedback

Results by Question

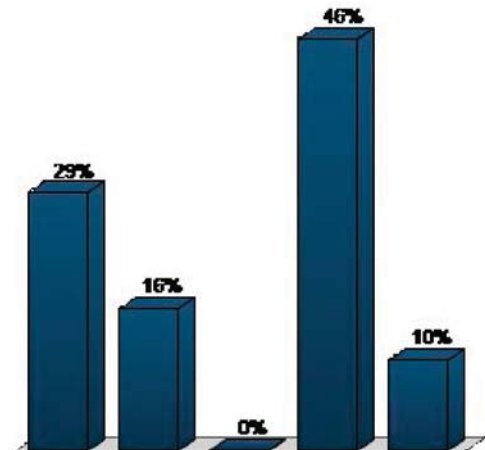
1. J_N_A_Y (Multiple Choice)

	Responses	
	Percent	Count
R A U (c)	66.67%	42
O W I	1.59%	1
U P O	11.11%	7
O O M	20.63%	13
Totals	100%	63



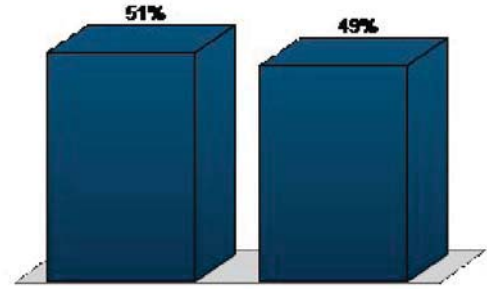
2. Where do you live? (Demographic Assignment)

	Responses	
	Percent	Count
First Addition/Forest Hills	28.57%	20
Evergreen Neighborhood	15.71%	11
Old Town or Birdshill	0%	0
Another neighborhood in LO	45.71%	32
Outside Lake Oswego	10%	7
Totals	100%	70



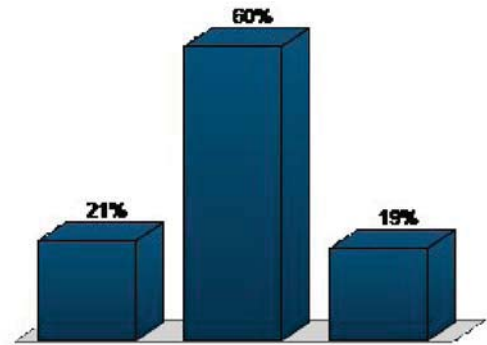
3. Do you own or work for a business located in Lake Oswego? (Multiple Choice)

Responses		
	Percent	Count
Yes	51.43%	36
No	48.57%	34
Totals	100%	70



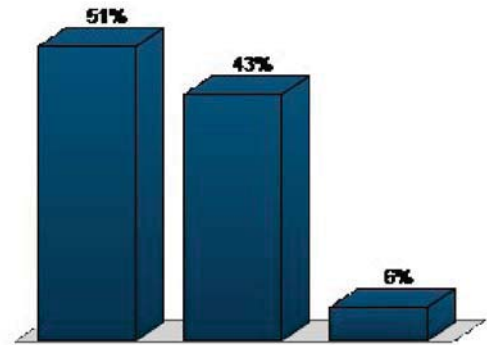
4. How many people live in your household? (Demographic Assignment)

Responses		
	Percent	Count
Just me	20.59%	14
Two	60.29%	41
Three or more	19.12%	13
Totals	100%	68



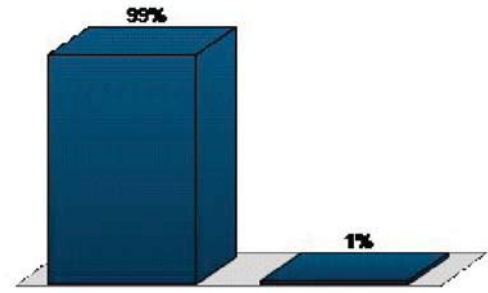
5. Do you have pets? (Multiple Choice)

Responses		
	Percent	Count
Yes	51.43%	36
No	42.86%	30
Define "pet"	5.71%	4
Totals	100%	70



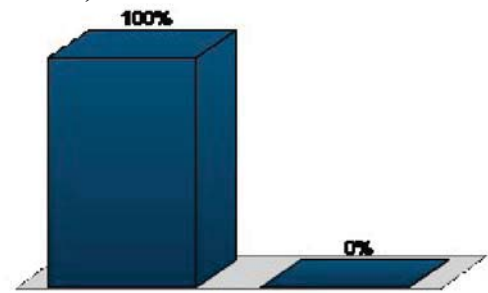
6. Downtown Lake Oswego should be a place where....We have good options for eating and drinking (Multiple Choice)

Responses		
	Percent	Count
Yes	98.55%	68
No	1.45%	1
Totals	100%	69



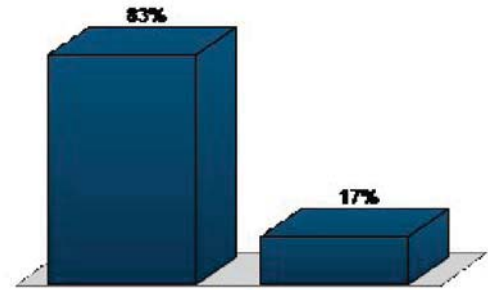
7. We can find a variety of goods and services that we need (Multiple Choice)

Responses		
	Percent	Count
Yes	100%	68
No	0%	0
Totals	100%	68



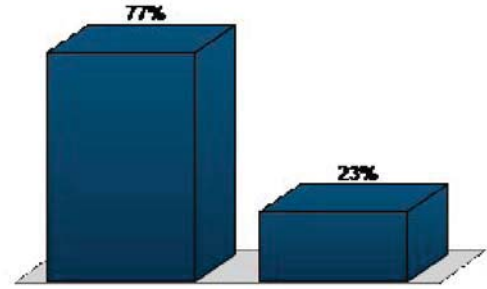
8. Specialty shops attract visitors to our city (Multiple Choice)

Responses		
	Percent	Count
Yes	82.61%	57
No	17.39%	12
Totals	100%	69



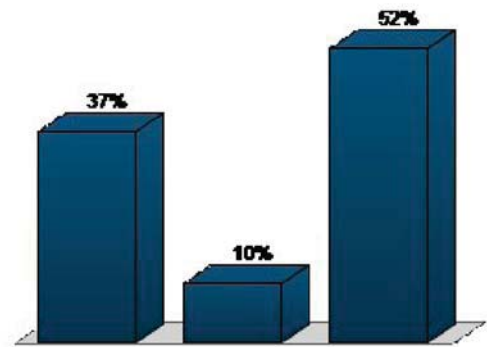
9. People can live and be less dependent on a car (Multiple Choice)

Responses		
	Percent	Count
Yes	76.81%	53
No	23.19%	16
Totals	100%	69



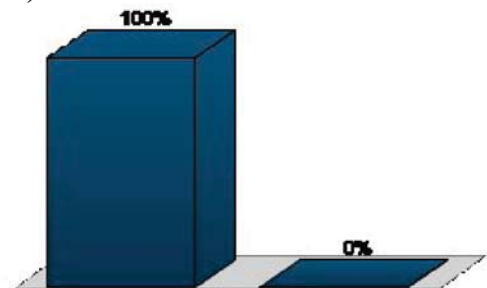
10. There is an active night life (Multiple Choice)

Responses		
	Percent	Count
Yes	37.31%	25
No	10.45%	7
Yes, as long as it's not too loud	52.24%	35
Totals	100%	67



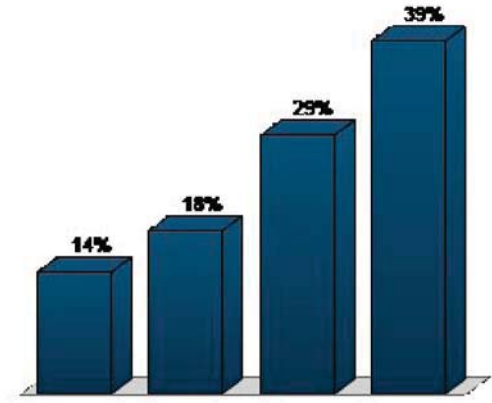
11. I can be proud to take visiting friends and relatives (Multiple Choice)

Responses		
	Percent	Count
Yes	100%	67
No	0%	0
Totals	100%	67



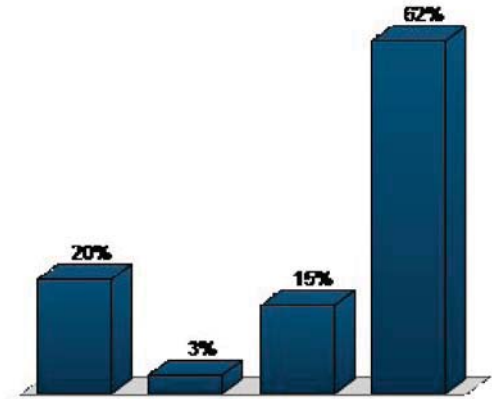
12. 1. Art Council/Art Gallery (Multiple Choice)

Responses		
	Percent	Count
Not a good idea	13.64%	9
Neutral	18.18%	12
OK, not bad	28.79%	19
Great idea	39.39%	26
Totals	100%	66



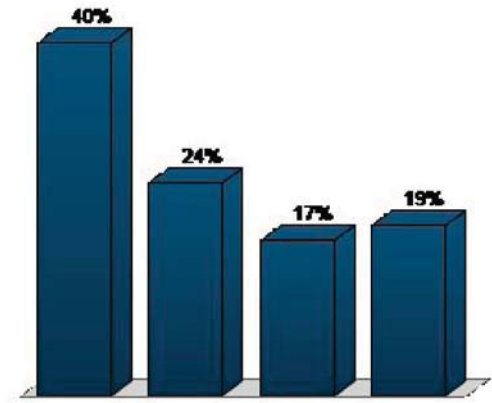
13. 2. Mixed use housing/retail (Multiple Choice)

Responses		
	Percent	Count
Not a good idea	20%	13
Neutral	3.08%	2
OK, not bad	15.38%	10
Great idea	61.54%	40
Totals	100%	65



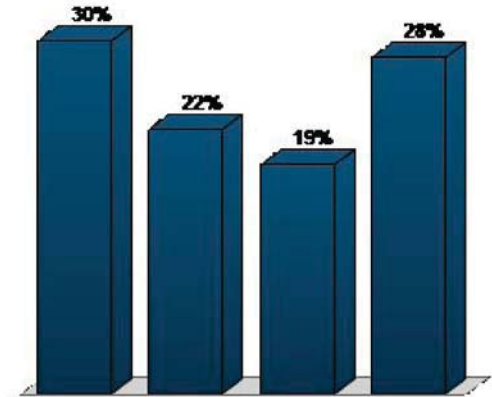
14. 3. Housing for...senior citizens (Multiple Choice)

	Responses	
	Percent	Count
Not a good idea	39.68%	25
Neutral	23.81%	15
OK, not bad	17.46%	11
Great idea	19.05%	12
Totals	100%	63



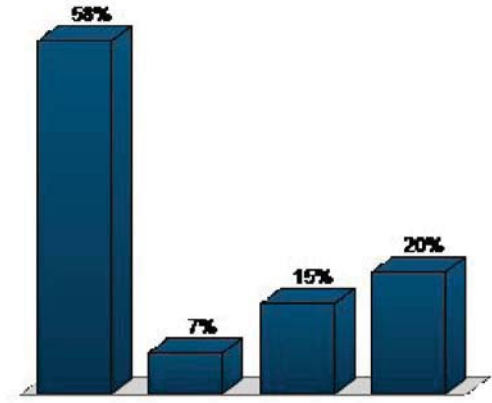
15. 4. Housing for younger people (Multiple Choice)

	Responses	
	Percent	Count
Not a good idea	29.85%	20
Neutral	22.39%	15
OK, not bad	19.4%	13
Great idea	28.36%	19
Totals	100%	67



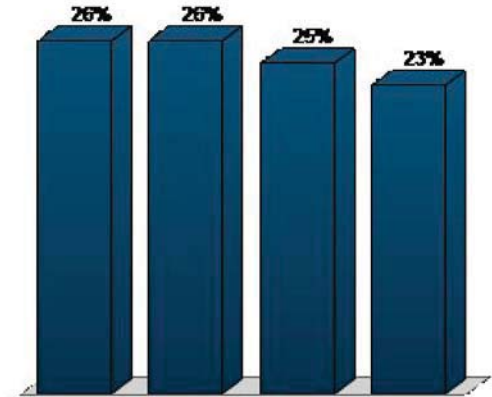
16. 5. Workforce housing (Multiple Choice)

	Responses	
	Percent	Count
Not a good idea	58.33%	35
Neutral	6.67%	4
OK, not bad	15%	9
Great idea	20%	12
Totals	100%	60



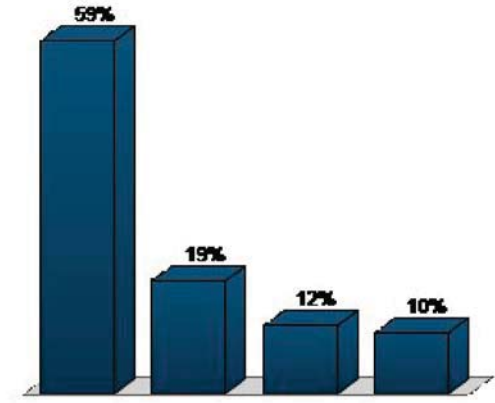
17. 6. Owner-occupied housing (Multiple Choice)

	Responses	
	Percent	Count
Not a good idea	26.23%	16
Neutral	26.23%	16
OK, not bad	24.59%	15
Great idea	22.95%	14
Totals	100%	61



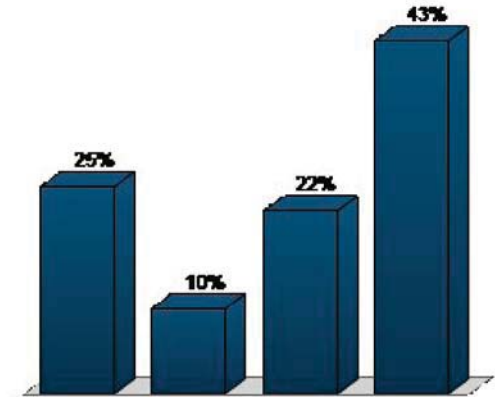
18. 7. Museum (Multiple Choice)

Responses		
	Percent	Count
Not a good idea	59.42%	41
Neutral	18.84%	13
OK, not bad	11.59%	8
Great idea	10.14%	7
Totals	100%	69



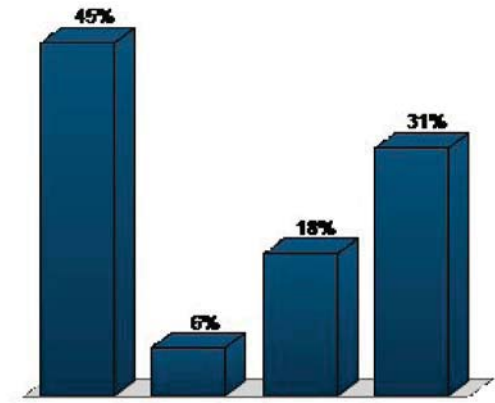
19. 8. Public meeting space (Multiple Choice)

Responses		
	Percent	Count
Not a good idea	25%	17
Neutral	10.29%	7
OK, not bad	22.06%	15
Great idea	42.65%	29
Totals	100%	68



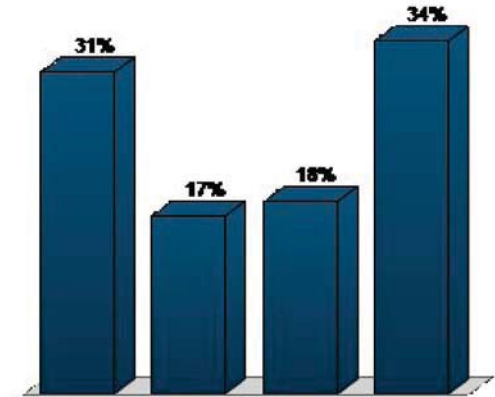
20. 9. Library (Multiple Choice)

Responses		
	Percent	Count
Not a good idea	44.78%	30
Neutral	5.97%	4
OK, not bad	17.91%	12
Great idea	31.34%	21
Totals	100%	67



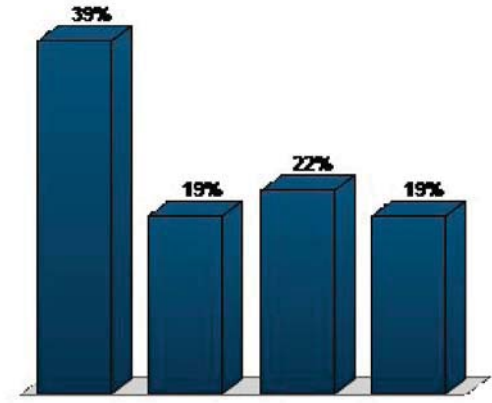
21. 10. Public parking (Multiple Choice)

Responses		
	Percent	Count
Not a good idea	30.77%	20
Neutral	16.92%	11
OK, not bad	18.46%	12
Great idea	33.85%	22
Totals	100%	65



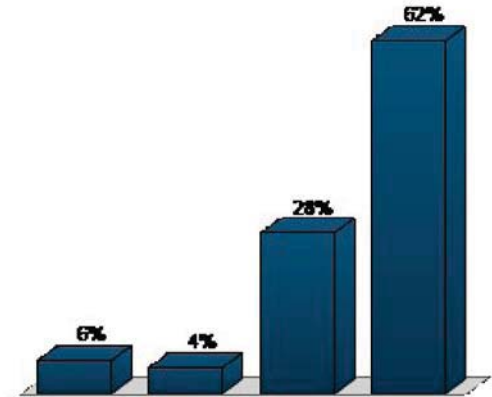
22. 11. Grocery store (Multiple Choice)

	Responses	
	Percent	Count
Not a good idea	38.81%	26
Neutral	19.4%	13
OK, not bad	22.39%	15
Great idea	19.4%	13
Totals	100%	67



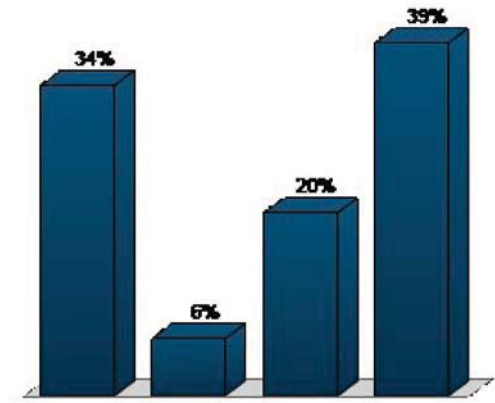
23. 12. Small scale retail (Multiple Choice)

	Responses	
	Percent	Count
Not a good idea	5.88%	4
Neutral	4.41%	3
OK, not bad	27.94%	19
Great idea	61.76%	42
Totals	100%	68



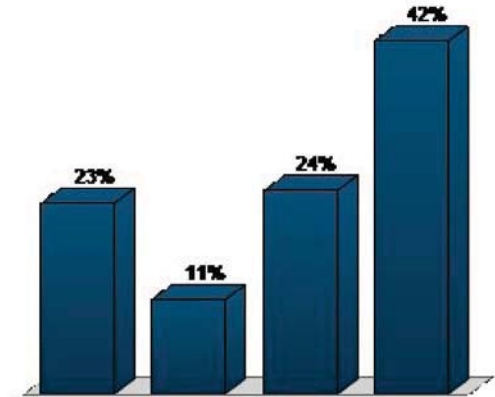
24. 13. Greenspace (Multiple Choice)

Responses		
	Percent	Count
Not a good idea	34.38%	22
Neutral	6.25%	4
OK, not bad	20.31%	13
Great idea	39.06%	25
Totals	100%	64



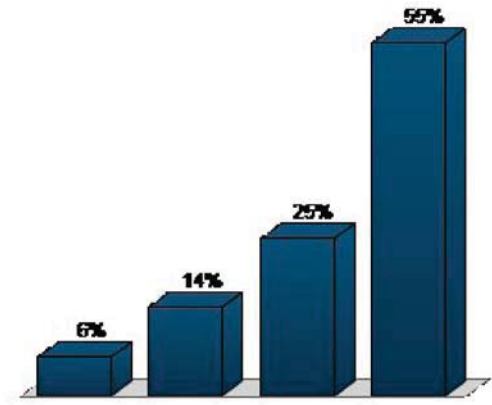
25. 14. Hotel (Multiple Choice)

Responses		
	Percent	Count
Not a good idea	22.58%	14
Neutral	11.29%	7
OK, not bad	24.19%	15
Great idea	41.94%	26
Totals	100%	62



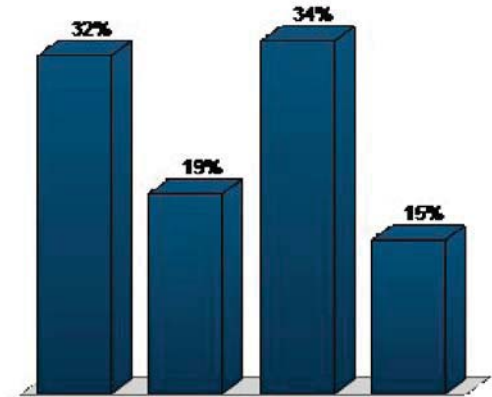
26. 15. Specialty retail (Multiple Choice)

	Responses	
	Percent	Count
Not a good idea	6.15%	4
Neutral	13.85%	9
OK, not bad	24.62%	16
Great idea	55.38%	36
Totals	100%	65



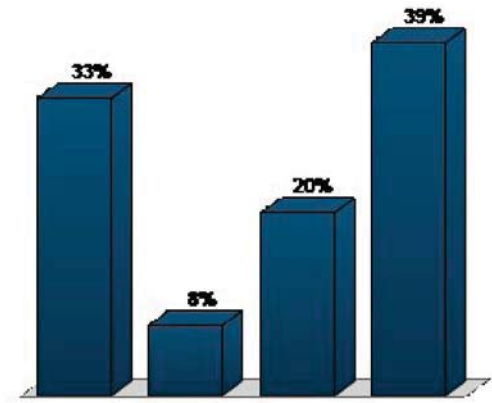
27. 16. Office (Multiple Choice)

	Responses	
	Percent	Count
Not a good idea	32.35%	22
Neutral	19.12%	13
OK, not bad	33.82%	23
Great idea	14.71%	10
Totals	100%	68



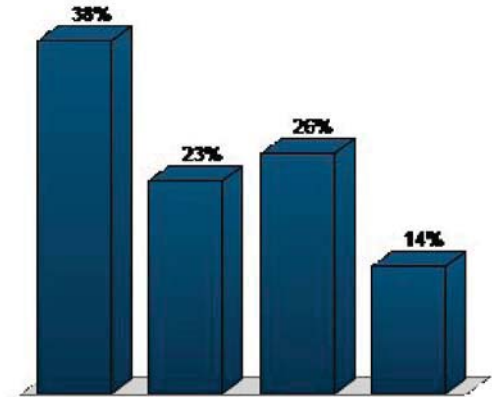
28. 17. Outdoor public space (Multiple Choice)

Responses		
	Percent	Count
Not a good idea	32.81%	21
Neutral	7.81%	5
OK, not bad	20.31%	13
Great idea	39.06%	25
Totals	100%	64



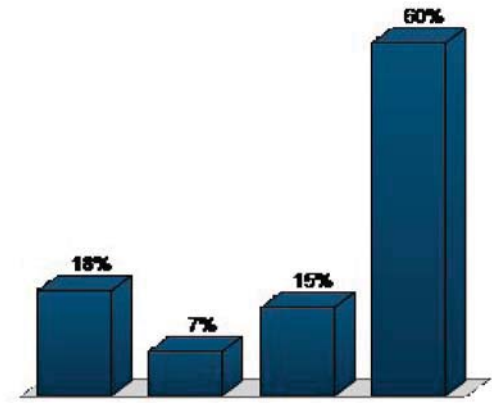
29. 18. Medical/health (Multiple Choice)

Responses		
	Percent	Count
Not a good idea	37.88%	25
Neutral	22.73%	15
OK, not bad	25.76%	17
Great idea	13.64%	9
Totals	100%	66



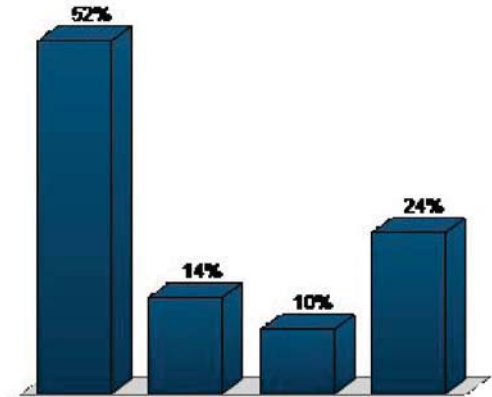
30. 19. Include gas station property (Multiple Choice)

	Responses	
	Percent	Count
Not a good idea	17.91%	12
Neutral	7.46%	5
OK, not bad	14.93%	10
Great idea	59.7%	40
Totals	100%	67



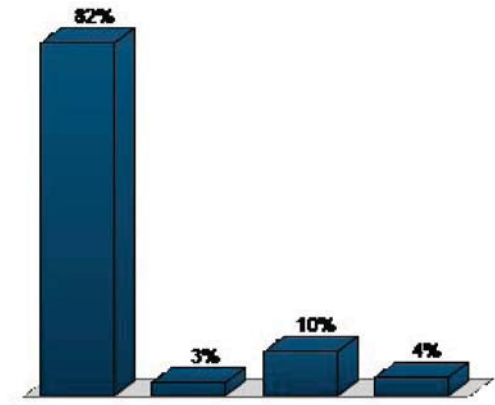
31. 20. Visitor center (Multiple Choice)

	Responses	
	Percent	Count
Not a good idea	52.38%	33
Neutral	14.29%	9
OK, not bad	9.52%	6
Great idea	23.81%	15
Totals	100%	63



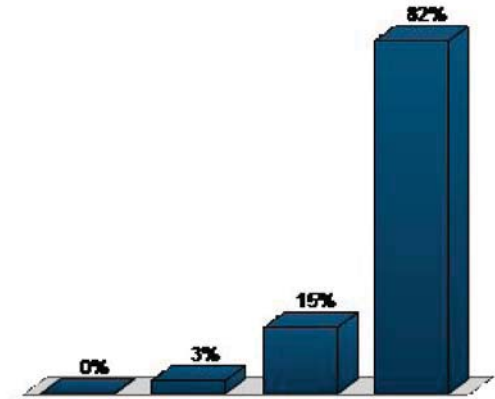
32. 21. Large scale retail (Multiple Choice)

	Responses	
	Percent	Count
Not a good idea	82.09%	55
Neutral	2.99%	2
OK, not bad	10.45%	7
Great idea	4.48%	3
Totals	100%	67



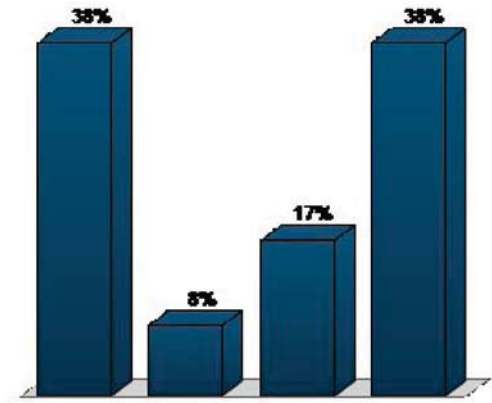
33. 22. Restaurant (Multiple Choice)

	Responses	
	Percent	Count
Not a good idea	0%	0
Neutral	3.08%	2
OK, not bad	15.38%	10
Great idea	81.54%	53
Totals	100%	65



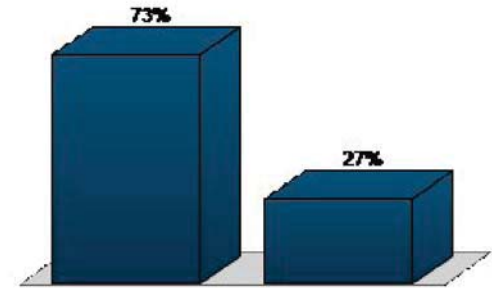
34. 23. Close 1st Street (Multiple Choice)

Responses		
	Percent	Count
Not a good idea	37.88%	25
Neutral	7.58%	5
OK, not bad	16.67%	11
Great idea	37.88%	25
Totals	100%	66



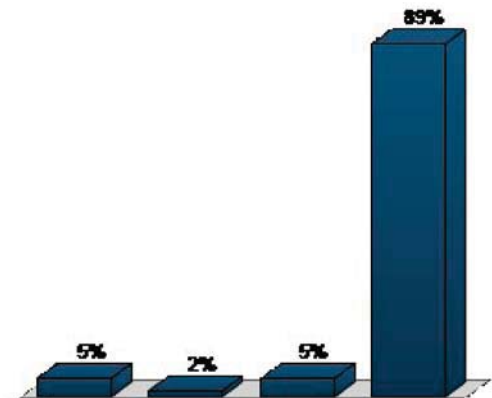
35. Do you support or oppose housing as a component of the project? (Demographic Assignment)

Responses		
	Percent	Count
Support	73.02%	46
Oppose	26.98%	17
Totals	100%	63



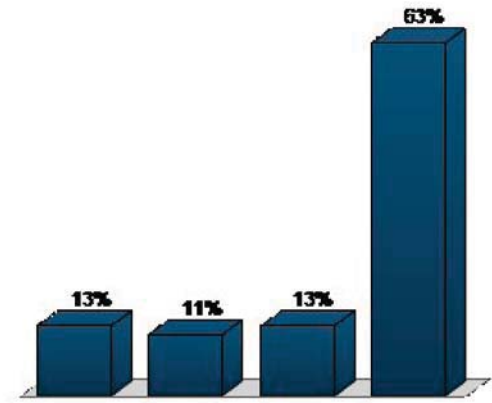
36. No adult stores (Multiple Choice)

Responses		
	Percent	Count
Not a good idea	4.69%	3
Neutral	1.56%	1
OK, not bad	4.69%	3
Great idea	89.06%	57
Totals	100%	64



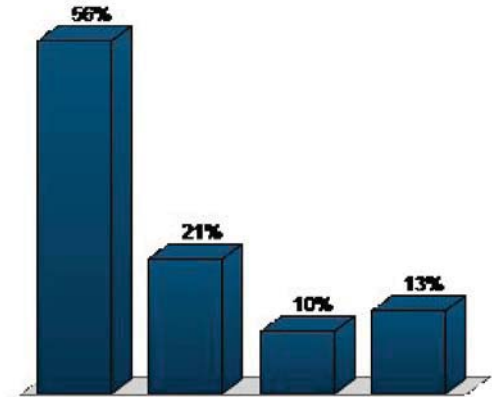
37. No marijuana stores (Multiple Choice)

	Responses	
	Percent	Count
Not a good idea	12.7%	8
Neutral	11.11%	7
OK, not bad	12.7%	8
Great idea	63.49%	40
Totals	100%	63



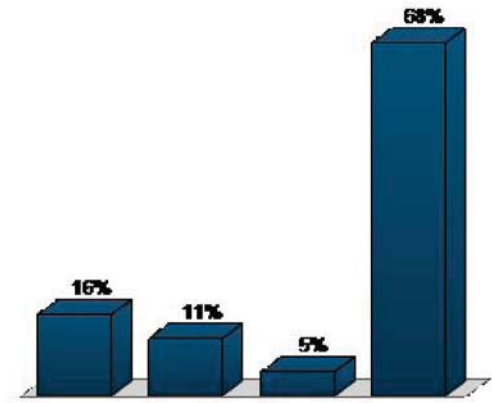
38. No grocery (Multiple Choice)

	Responses	
	Percent	Count
Not a good idea	55.74%	34
Neutral	21.31%	13
OK, not bad	9.84%	6
Great idea	13.11%	8
Totals	100%	61



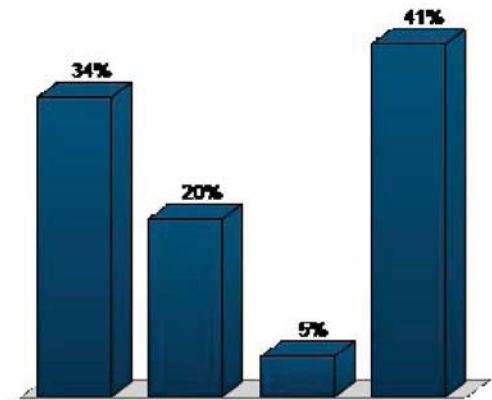
39. Not auto-oriented (Multiple Choice)

Responses		
	Percent	Count
Not a good idea	15.87%	10
Neutral	11.11%	7
OK, not bad	4.76%	3
Great idea	68.25%	43
Totals	100%	63



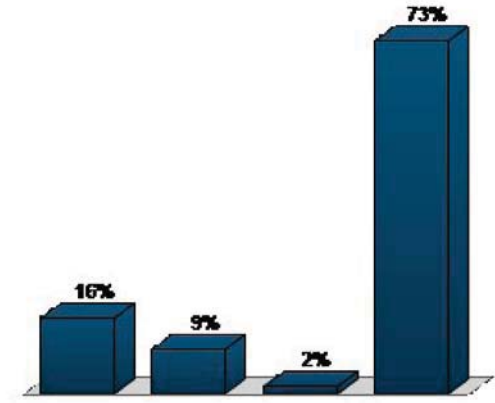
40. No ground floor office (Multiple Choice)

Responses		
	Percent	Count
Not a good idea	34.38%	22
Neutral	20.31%	13
OK, not bad	4.69%	3
Great idea	40.62%	26
Totals	100%	64



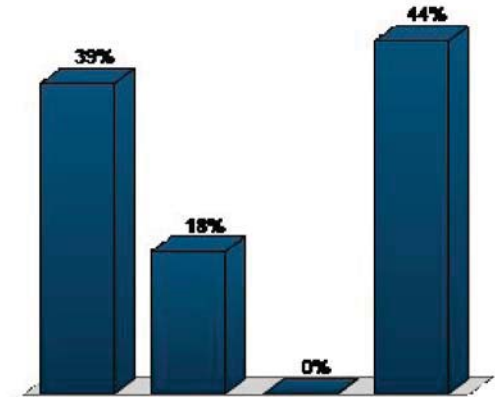
41. No large retail (Multiple Choice)

Responses		
	Percent	Count
Not a good idea	15.62%	10
Neutral	9.38%	6
OK, not bad	1.56%	1
Great idea	73.44%	47
Totals	100%	64



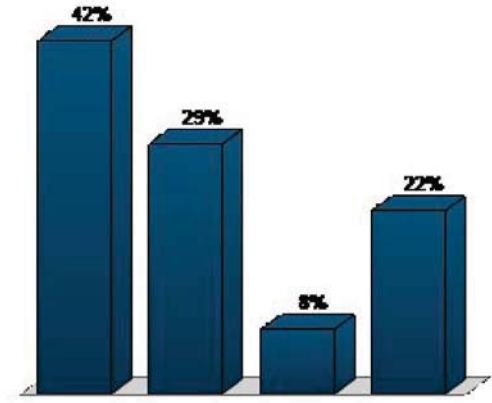
42. No single purpose for site (Multiple Choice)

Responses		
	Percent	Count
Not a good idea	38.6%	22
Neutral	17.54%	10
OK, not bad	0%	0
Great idea	43.86%	25
Totals	100%	57



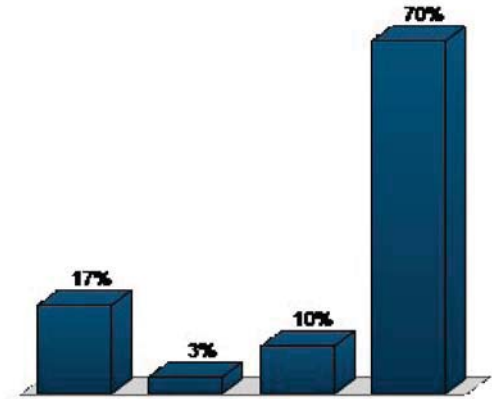
43. No salons (Multiple Choice)

Responses		
	Percent	Count
Not a good idea	41.54%	27
Neutral	29.23%	19
OK, not bad	7.69%	5
Great idea	21.54%	14
Totals	100%	65



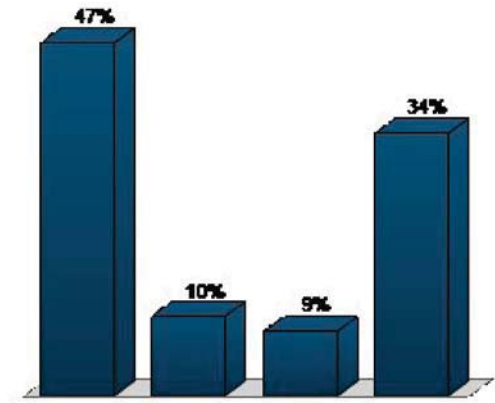
44. Ground floor residential (Multiple Choice)

Responses		
	Percent	Count
Not a good idea	17.46%	11
Neutral	3.17%	2
OK, not bad	9.52%	6
Great idea	69.84%	44
Totals	100%	63



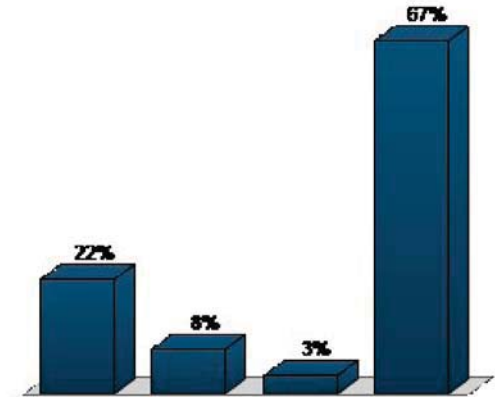
45. No public/city-owned uses (Multiple Choice)

	Responses	
	Percent	Count
Not a good idea	46.55%	27
Neutral	10.34%	6
OK, not bad	8.62%	5
Great idea	34.48%	20
Totals	100%	58



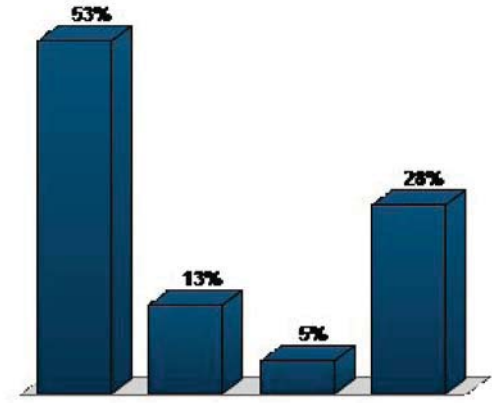
46. No subsidized housing (Multiple Choice)

	Responses	
	Percent	Count
Not a good idea	21.67%	13
Neutral	8.33%	5
OK, not bad	3.33%	2
Great idea	66.67%	40
Totals	100%	60



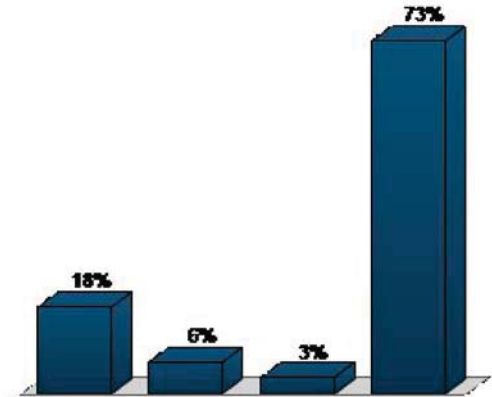
47. No sky bridge (Multiple Choice)

Responses		
	Percent	Count
Not a good idea	53.33%	32
Neutral	13.33%	8
OK, not bad	5%	3
Great idea	28.33%	17
Totals	100%	60



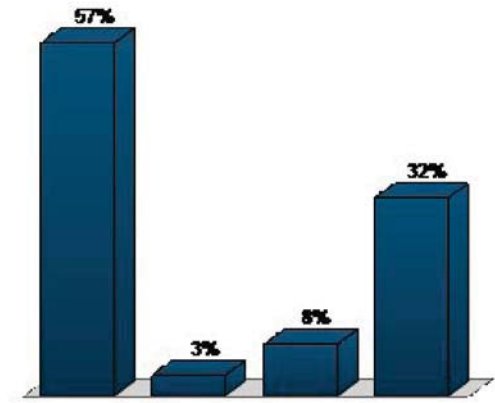
48. Nothing over 4 stories (Multiple Choice)

Responses		
	Percent	Count
Not a good idea	17.74%	11
Neutral	6.45%	4
OK, not bad	3.23%	2
Great idea	72.58%	45
Totals	100%	62



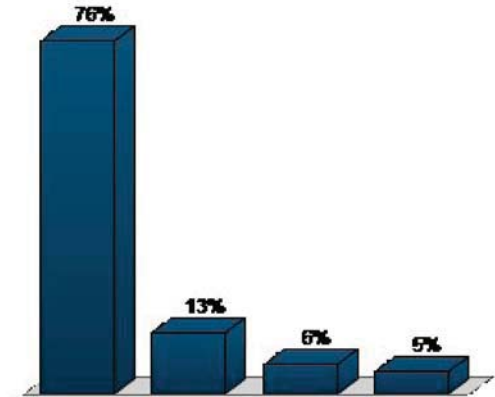
49. Nothing over 3 stories (Multiple Choice)

Responses		
	Percent	Count
Not a good idea	56.67%	34
Neutral	3.33%	2
OK, not bad	8.33%	5
Great idea	31.67%	19
Totals	100%	60



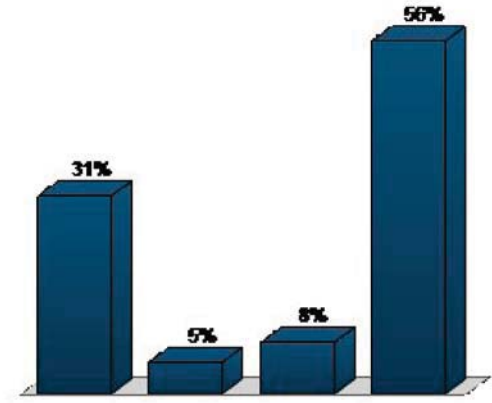
50. Nothing over 2 stories on Lacey's site (Multiple Choice)

Responses		
	Percent	Count
Not a good idea	75.81%	47
Neutral	12.9%	8
OK, not bad	6.45%	4
Great idea	4.84%	3
Totals	100%	62



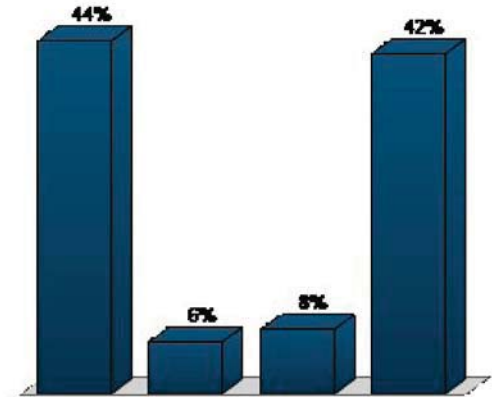
51. No surface parking (Multiple Choice)

	Responses	
	Percent	Count
Not a good idea	31.15%	19
Neutral	4.92%	3
OK, not bad	8.2%	5
Great idea	55.74%	34
Totals	100%	61



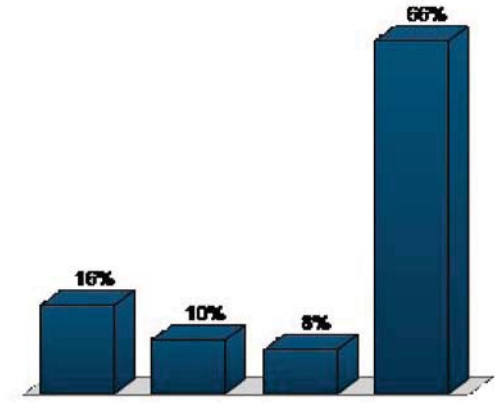
52. No above ground parking (Multiple Choice)

	Responses	
	Percent	Count
Not a good idea	43.55%	27
Neutral	6.45%	4
OK, not bad	8.06%	5
Great idea	41.94%	26
Totals	100%	62



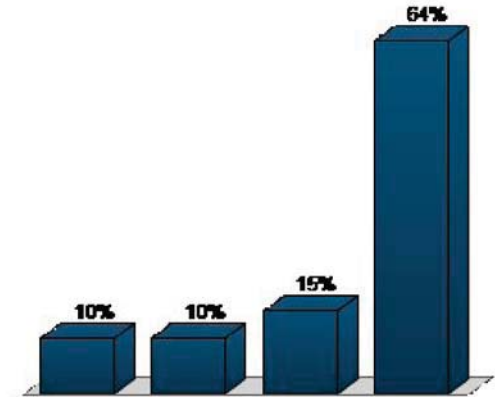
53. No spillover parking (Multiple Choice)

Responses		
	Percent	Count
Not a good idea	16.39%	10
Neutral	9.84%	6
OK, not bad	8.2%	5
Great idea	65.57%	40
Totals	100%	61



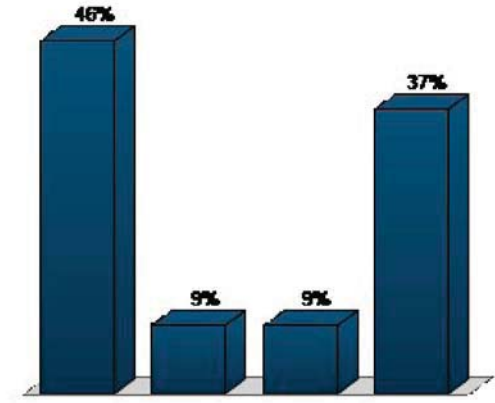
54. Minimize traffic impact on neighborhood (Multiple Choice)

Responses		
	Percent	Count
Not a good idea	10.17%	6
Neutral	10.17%	6
OK, not bad	15.25%	9
Great idea	64.41%	38
Totals	100%	59



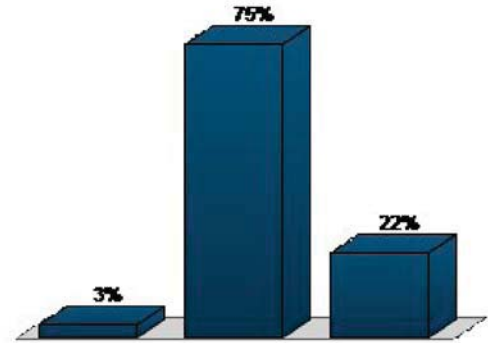
55. No more public funding (Multiple Choice)

Responses		
	Percent	Count
Not a good idea	45.61%	26
Neutral	8.77%	5
OK, not bad	8.77%	5
Great idea	36.84%	21
Totals	100%	57



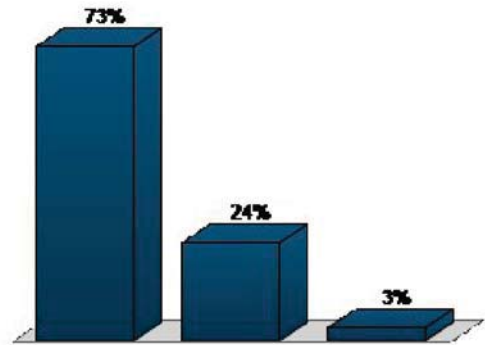
56. FORUM FEEDBACK Was the length OK? (Multiple Choice)

Responses		
	Percent	Count
Not enough time	3.33%	2
OK	75%	45
Too long	21.67%	13
Totals	100%	60



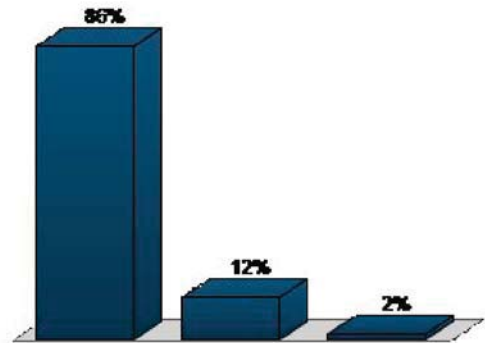
57. FORUM FEEDBACKIs Saturday morning a good time? (Multiple Choice)

Responses		
	Percent	Count
Yes	72.58%	45
I would prefer an evening forum	24.19%	15
I would prefer a midweek daytime forum	3.23%	2
Totals	100%	62



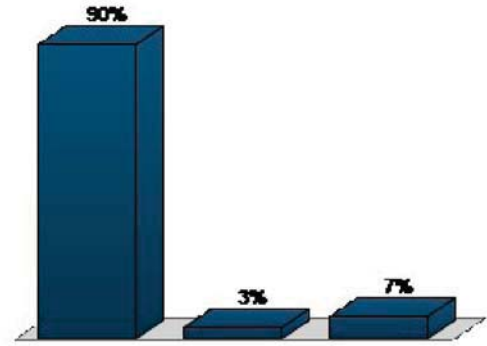
58. FORUM FEEDBACKDid you feel your ideas were listened to? (Multiple Choice)

Responses		
	Percent	Count
Yes	85.96%	49
Some but not all	12.28%	7
No	1.75%	1
Totals	100%	57



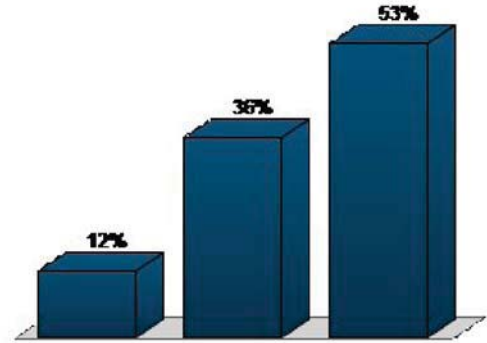
59. FORUM FEEDBACKDid you appreciate hearing the ideas and observations of others? (Multiple Choice)

Responses		
	Percent	Count
Yes	90%	54
No, it wasted my time	3.33%	2
Yes, but they were strange	6.67%	4
Totals	100%	60



60. FORUM FEEDBACKDo you consider yourself an introvert or extrovert? (Demographic Assignment)

Responses		
	Percent	Count
Introvert	11.86%	7
Extrovert	35.59%	21
Omnivert (some of both)	52.54%	31
Totals	100%	59



61. FORUM FEEDBACK Overall, how did you like the forum? (Demographic Assignment)

Responses		
	Percent	Count
I liked it; a good way to encourage dialogue	95%	57
I prefer formal public hearings	0%	0
OK, but keep trying...	5%	3
Totals	100%	60

