

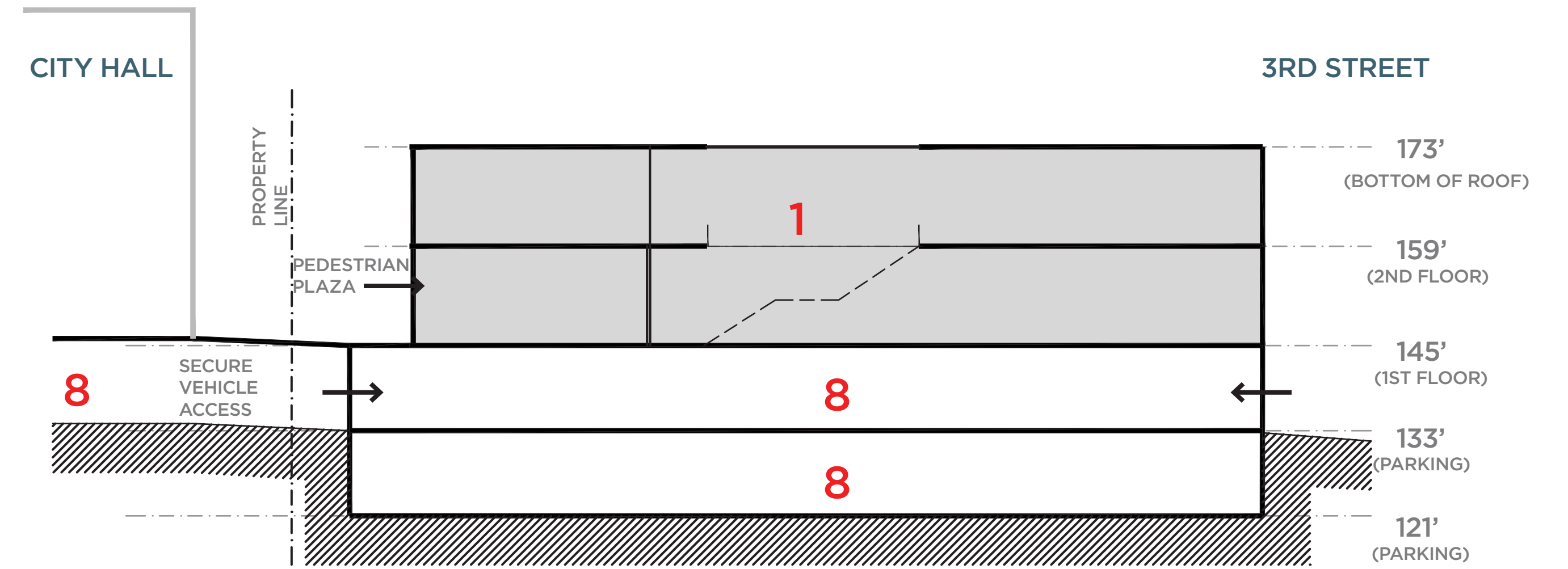
SITE PLAN
0 10' 20'

SITE SUMMARY

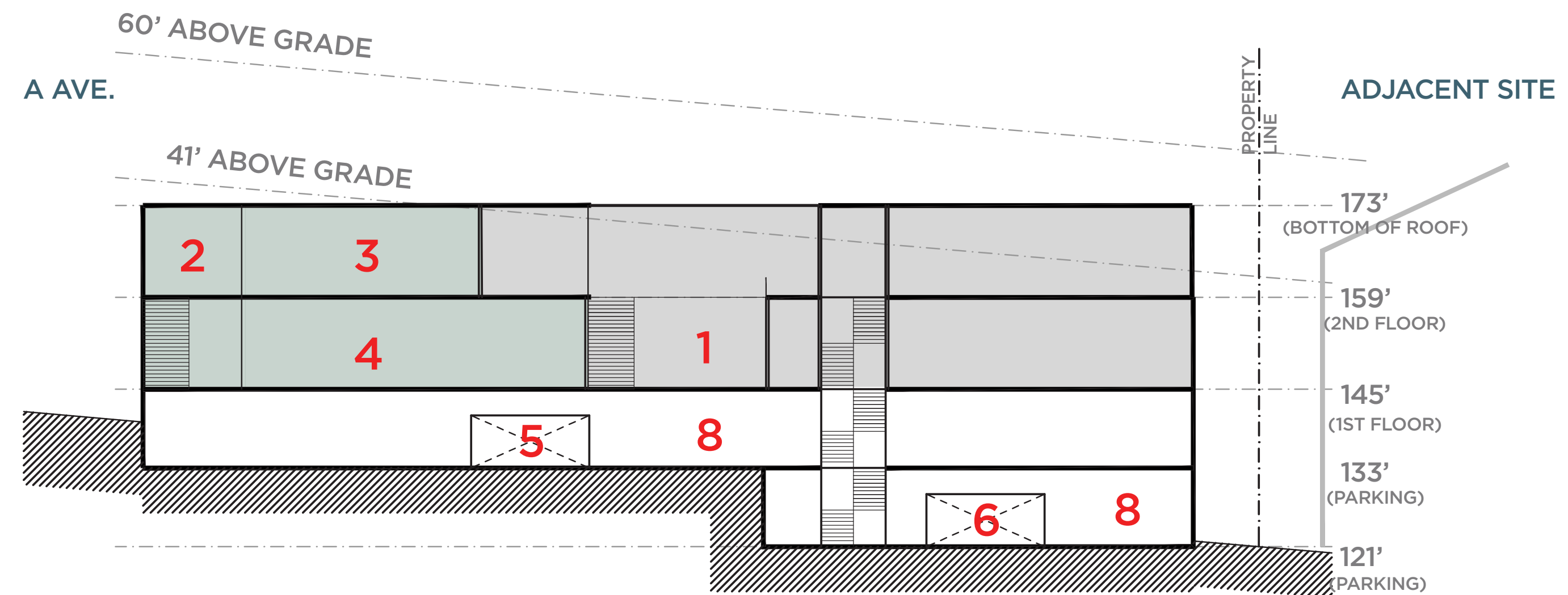
- SECURE PARKING GARAGE: 52 GARAGE SPACES
- SITE SIZE: 20,500 SF
- BUILDING SIZE (APPROX.):
 - FIRST FLOOR: 18,365 SF
 - SECOND FLOOR: 17,812 SF
 - TOTAL: 36,177 SF

SITE ELEMENTS

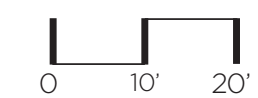
1. ENTRY PLAZA
2. PUBLIC LOBBY
3. POLICE LOBBY
4. ARTS COUNCIL AND BOOKTIQUE
5. POLICE DEPARTMENT
6. STAIR TO COMMUNITY ROOM
7. EXISTING ELEVATED PARKING
8. EXISTING ON-GRADE PARKING
9. PARKING GARAGE ENTRY - UPPER LEVEL
10. PARKING GARAGE ENTRY - LOWER LEVEL
11. EXISTING LAKE OSWEGO CITY HALL



CROSS SECTION THROUGH SITE (EAST-WEST)



LONG SECTION THROUGH SITE (NORTH-SOUTH)

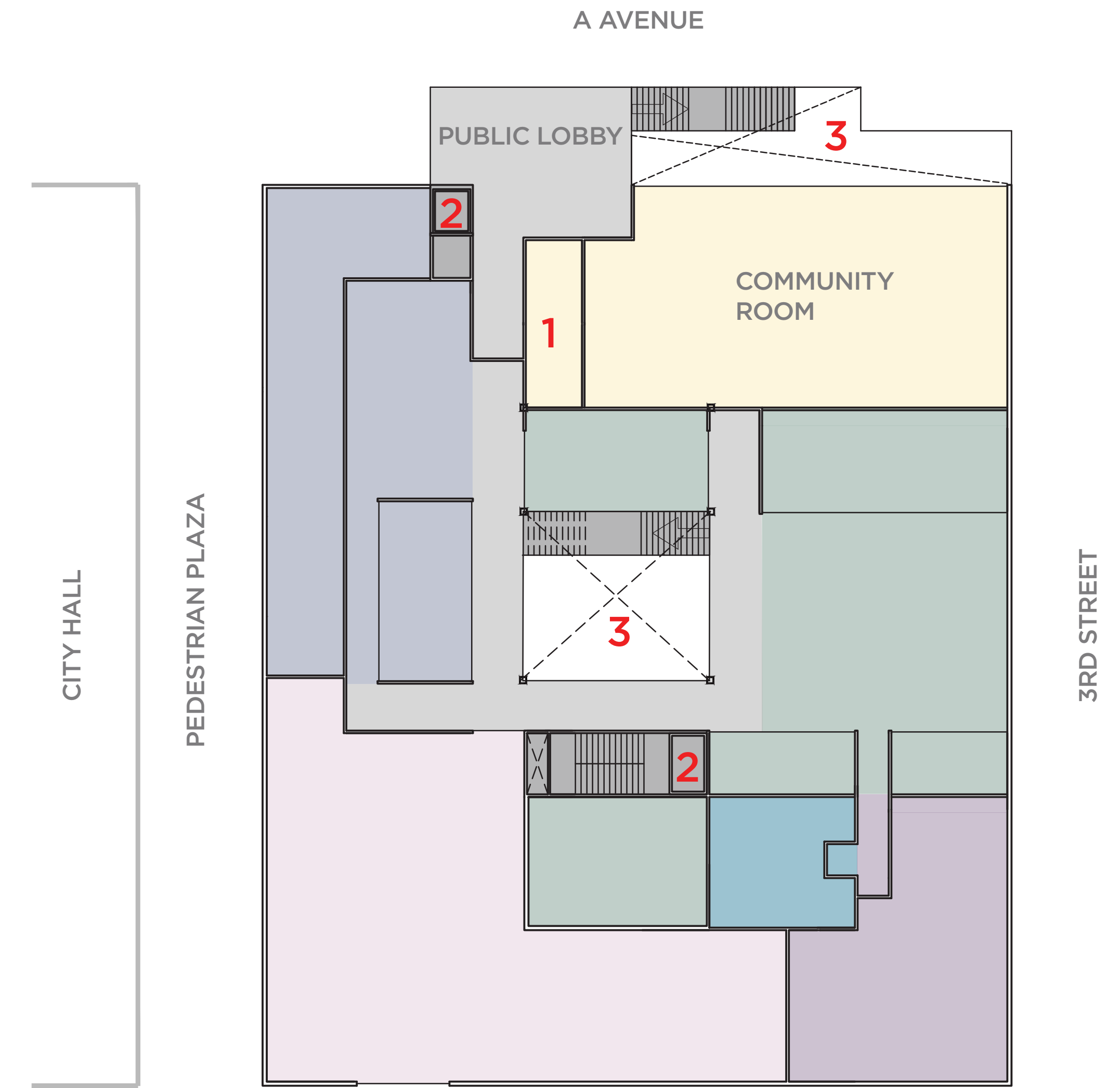
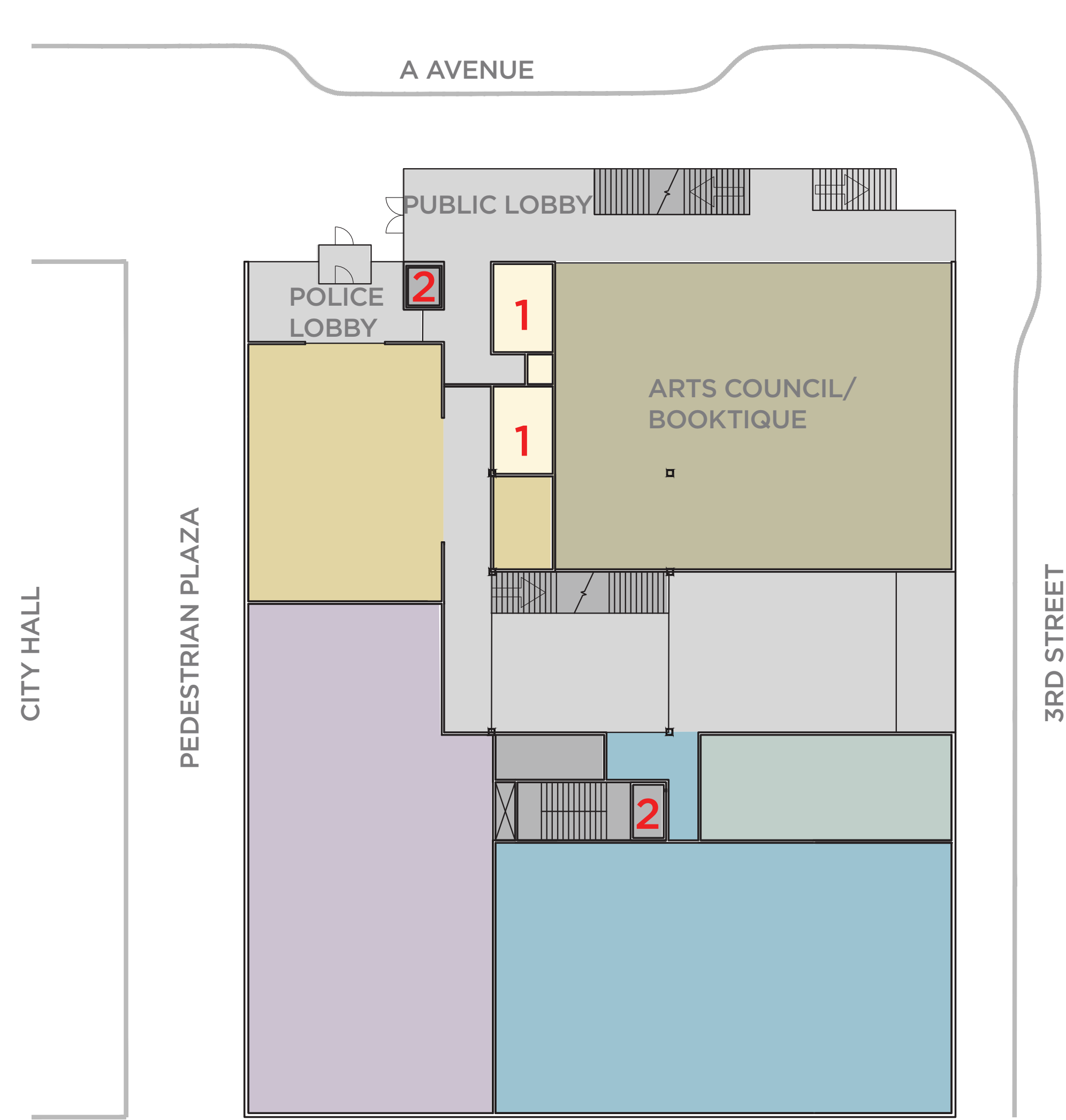


SECTION ELEMENTS

1. POLICE DEPARTMENT
2. PUBLIC LOBBY
3. COMMUNITY ROOM
4. ARTS COUNCIL AND BOOKTIQUE
5. PARKING GARAGE ENTRY - UPPER LEVEL
6. PARKING GARAGE ENTRY - LOWER LEVEL
7. EXISTING LAKE OSWEGO CITY HALL
8. PARKING GARAGE

LEGEND

- PUBLIC
- POLICE
- EXTERIOR
- PARKING



FIRST FLOOR PLAN
 0 10' 20'

SECOND FLOOR PLAN
 0 10' 20'

PLAN ELEMENTS

- 1. PUBLIC RESTROOMS
- 2. ELEVATOR
- 3. OPEN TO BELOW

BUILDING PROGRAM LEGEND

CIRCULATION/ COMMON AREAS	ADMINISTRATION	LOCOM/IT	POLICE SUPPORT	ARTS COUNCIL AND BOOKTIQUE
PUBLIC FACILITY CORE	RECORDS	POLICE OPERATIONS	VERTICAL CIRCULATION	LOCKERS/ RESTROOMS