

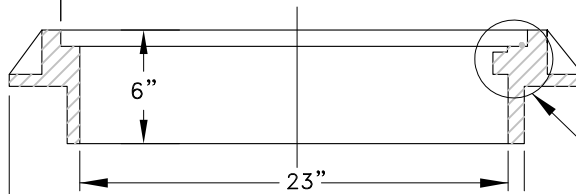
# TAMPERPROOF MANHOLE RING

# 3-BOLT DOWN COVER

STANDARD LIFTING NOTCH WITH PICK HOLE



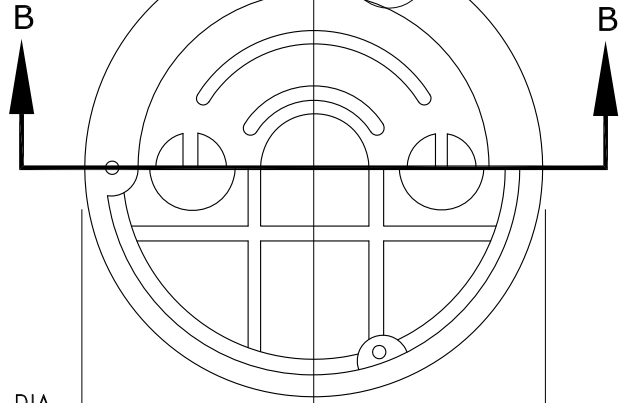
GREY IRON CASTINGS SHALL CONFORM TO ASTM A48 CLASS 30.



SECTION A-A

7/8" [22mm] LETTERING

A



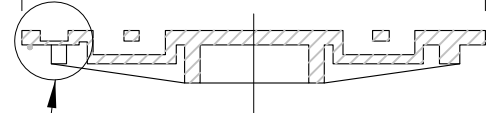
SEE BOLT DOWN DETAIL

B

B

(2) 3/4" DIA VENT HOLES

24 3/4"



SECTION B-B

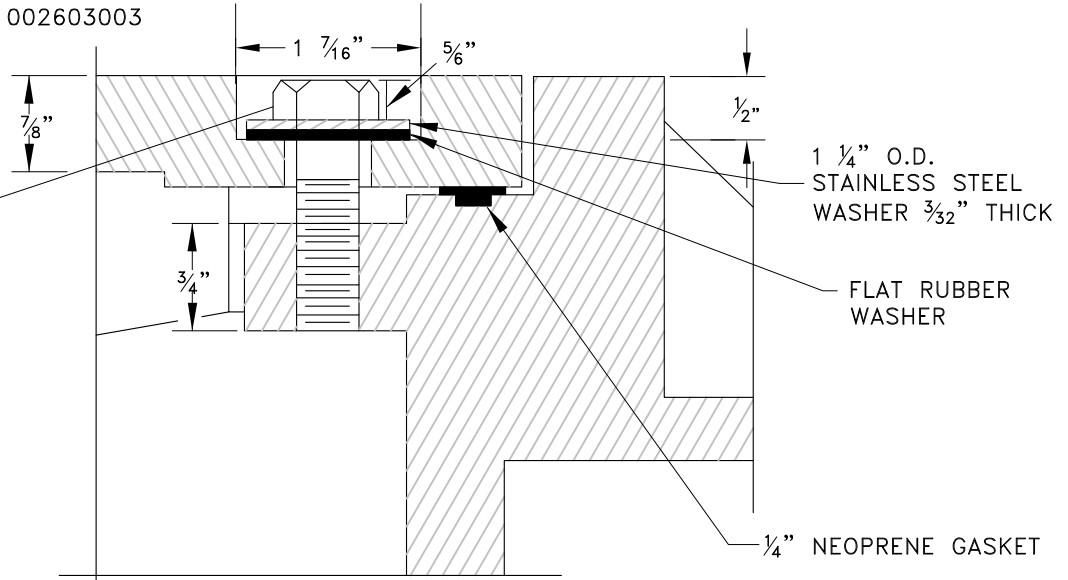
TOP VIEW

NOTE: ALL STORM MANHOLE COVERS ARE TO INCLUDE CITY OF L.O. FISH LOGO CAST INTO CENTER OF LID PER EJ PRODUCT # 002603003

NOTE: TAMPERPROOF MANHOLE FRAME AND COVER SHALL BE USED IN ALL EASEMENT AND OFF STREET AREAS.

1/2" -13 N.C. X 1 1/8" HEX HEAD STAINLESS STEEL CAP SCREW. 3 REQ'D. PER COVER

BOLT DOWN DETAIL



NOTE: COVER AND FRAME SHALL BE OF GRAY CAST IRON ASTM A-48 CLASS 30



City of Lake Oswego  
Engineering Division

Erica Rooney, P.E. City Engineer

## TAMPERPROOF STORM MANHOLE FRAME & COVER

# SD2-02

EFFECTIVE DATE: JANUARY 1, 2018

NOT TO SCALE

DRAWING NUMBER