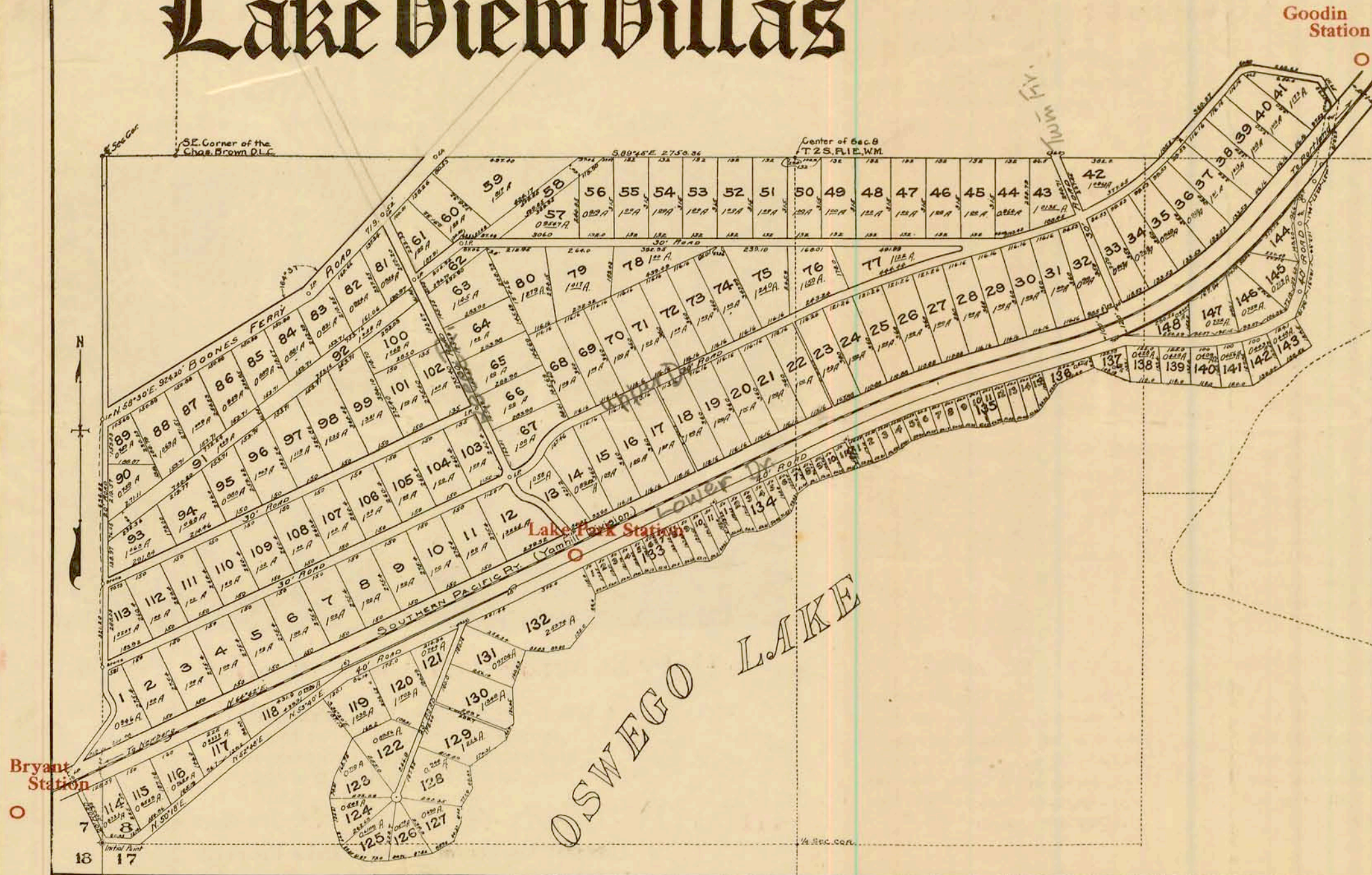


# Lake View Villas



## Building Restrictions

On all lots in Blocks 133, 134 and 135, single dwellings can be built costing not less than \$750 each.

On Blocks 138 to 148 not more than two dwellings costing not less than \$750 each.

Blocks 1 to 11 and 14 to 41, dwellings costing not less than \$750 each.

Building restrictions on all other residence blocks—dwellings to cost not less than \$500 each.

Blocks 136 and 137 reserved for public moorings.

## Privileges

Boating, bathing and fishing privileges go with every acre or lot, whether on the lake shore or not.