

FOR SALE BY

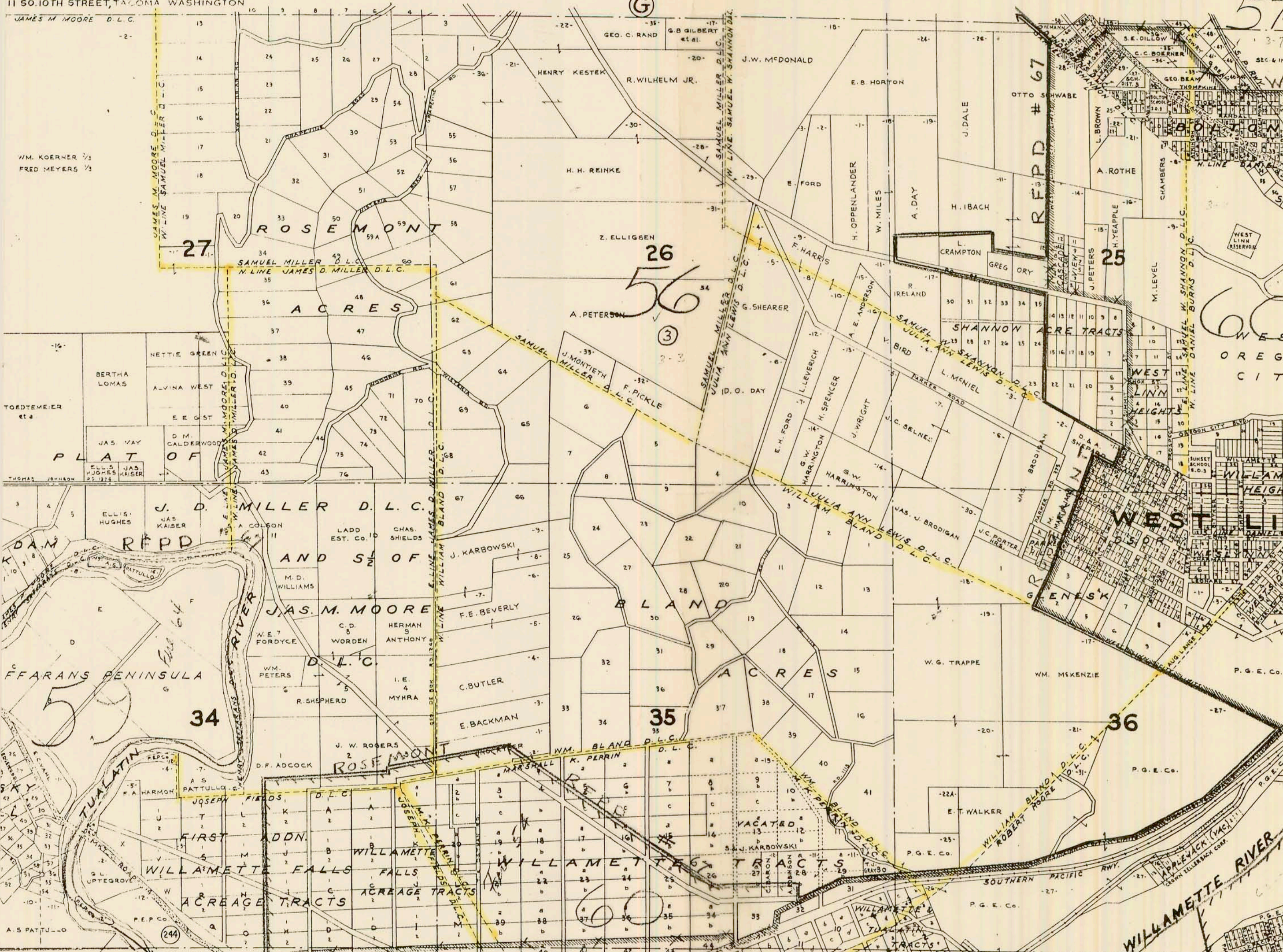
HAS F. METSKER CIVIL ENGINEER  
112 SWETLAND BLDG., PORTLAND, OREGON  
11 50.10TH STREET, TACOMA, WASHINGTON

1951

# TOWNSHIP 2 S., RANGE 1 E. W. M.

## CLACKAMAS COUNTY, OREGON

SCALE 1 IN. = 1000 FT.



LOT NO 1 2-EUGENE HORTON 3-R.H. FORD 4-W.M. COFFMAN 5-FRED DRAGER 6-FRED DRAGER 7-FRED DRAGER 8-FRED DRAGER 9-FRED DRAGER 10-FRED DRAGER 11-FRED DRAGER 12-FRED DRAGER 13-FRED DRAGER 14-FRED DRAGER 15-FRED DRAGER 16-FRED DRAGER 17-FRED DRAGER 18-FRED DRAGER 19-FRED DRAGER 20-FRED DRAGER 21-FRED DRAGER 22-FRED DRAGER 23-FRED DRAGER 24-FRED DRAGER	1 2 3 4 5 6 7 8 9 10 11 12 13 14 15 16 17 18 19 20 21 22 23 24 25 26 27 28 29 30 31 32 33 34 35 36 37 38 39 40 41 42 43 44 45 46 47 48 49 50 51 52 53 54 55 56 57 58 59 60 61 62 63 64 65 66 67 68 69 70 71 72 73 74 75 76 77 78 79 80 81 82 83 84 85 86 87 88 89 90 91 92 93 94 95 96 97 98 99 100	67-G.R. PORTER 68-LONG 69-R.M. HUGHES 70-F. FISHER 71-T. BINGO 72-D.O. JONES 73-W.R. JORDAN 74-M. REYNOLDS 75-G. HARMON 76-F.A. HARMON 77-F.A. HARMON 78-F.A. HARMON 79-F.A. HARMON 80-F.A. HARMON 81-F.A. HARMON 82-F.A. HARMON 83-F.A. HARMON 84-F.A. HARMON 85-F.A. HARMON 86-F.A. HARMON 87-F.A. HARMON 88-F.A. HARMON 89-F.A. HARMON 90-F.A. HARMON 91-F.A. HARMON 92-F.A. HARMON 93-F.A. HARMON 94-F.A. HARMON 95-F.A. HARMON 96-F.A. HARMON 97-F.A. HARMON 98-F.A. HARMON 99-F.A. HARMON 100-F.A. HARMON	25-F. ANBERSON 26-G. WILCOX 27-T. G. DAY 28-MOOREHEAD 29-J.E. MONTIETH 30-L. W. FOX 31-G.B. RICHARDSON 32-M. GOETHEL 33-P.P. ZINSLI 34-M.M. SMITH 35-F.L. BUSHMAN 36-G. MYERS 37-H.H. MILLER 38-P. PAUL 39-A. H. GERTTULA 40-G. PREEVES 41-G. YNKER 42-AD. WILLAMETTE 43-FALLS ACRES TRS. 44-BINS 45-GEO. JONES 46-JOS. THORNBERRY 47-D. RATNIK 48-E. 49-F.D. REAM 50-G.H. CLAVES 51-M. J. OSTMAN 52-A. KELLY 53-A. KELLY 54-T. OSTMAN 55-K. THOMPSON 56-F. ULSKY	N.S. of P. W. MITTELSTADT O.P. CHAS. LAVRS O.R. W. MITTELSTADT S. Sp. Rd. M. J. HARMON T. U. V. No. 10. W. X. S. E. BABCOCK A. W. Sec. Mrs. J. Ballou B. C. STUART B. W. H. AND MIKEN E. 3872-P. PAULSEN C. C. N. DEVLIN D. S. 100-F. ULSKY F. ULSKY	F-3-UMBRAS G-UNO. KARBONSKIS SHANNON ACRES TRACTS 23-25-T. S. LYTTSELL 26-33-E. STAUFFER 34-I. S. LYTTSELL 35-O. K. LYTTSELL BOSKY DELL 18-19-J. W. DUNCAN 20-R. M. INGERSOLL 21-R. B. LINDERS 22-C. E. HENDRICK 23-C. H. WOOD 24-N. A. OLSEN	8-9-M. E. LEVEL 10-L. C. KOELLERMEIER 11-13-22-23-O. K. ALLEN 14-E. APPS 15-20-F. NESS 21-22-23-24-O. K. ALLEN 25-R. KOELLERMEIER 26-C. F. STABEN 27-U. C. MILLER 28-29-A. H. WIEBE 30-R. M. INGERSOLL 31-F. L. HARLAN 32-F. L. HARLAN 33-95-W. E. STRONG 34-L. A. WALLIS 35-47-A. WALLIS 48-49-T. H. NORMAN	25-C. C. CLIFFORD 26-L. A. ELLEY 27-M. L. SIMPSON 28-J. W. ROGERS 29-GEO. FERRY & E. BARNES 30-C. P. MANNING 31-J. W. THORNBERRY 32-W. H. BROWN 33-W. H. BROWN 34-U. C. MILLER 35-36-A. H. WIEBE 37-38-39-40-A. H. WIEBE 41-42-N. I. McDONALD 43-44-F. S. RIDDES 45-46-W. E. STRONG 47-L. A. WALLIS 48-49-T. H. NORMAN	50-A. R. BORLAND WILLAMETTE FALLS ACRES TRS. BINS 1-M. PETERSON 2-J. L. DAVIS 3-K. I. M. MOSIER 4-F. BACON 5-L. C. BROWNLEE 6-E. BARNES 7-C. P. MANNING 8-D. J. THORNBERRY 9-W. H. BROWN 10-U. C. MILLER 11-12-13-14-15-16-17-18-19-20-21-22-23-24-25-26-27-28-29-30-31-32-33-34-35-36-37-38-39-40-41-42-43-44-45-46-47-48-49-50-51-52-53-54-55-56-57-58-59-60-61-62-63-64-65-66-67-68-69-70-71-72-73-74-75-76-77-78-79-80-81-82-83-84-85-86-87-88-89-90-91-92-93-94-95-96-97-98-99-100	GLINESK SEC. 36 1-9-BALFOUR-GUTHRIE CO. LTD.
---	--	--	--	---	--	--	--	--	---