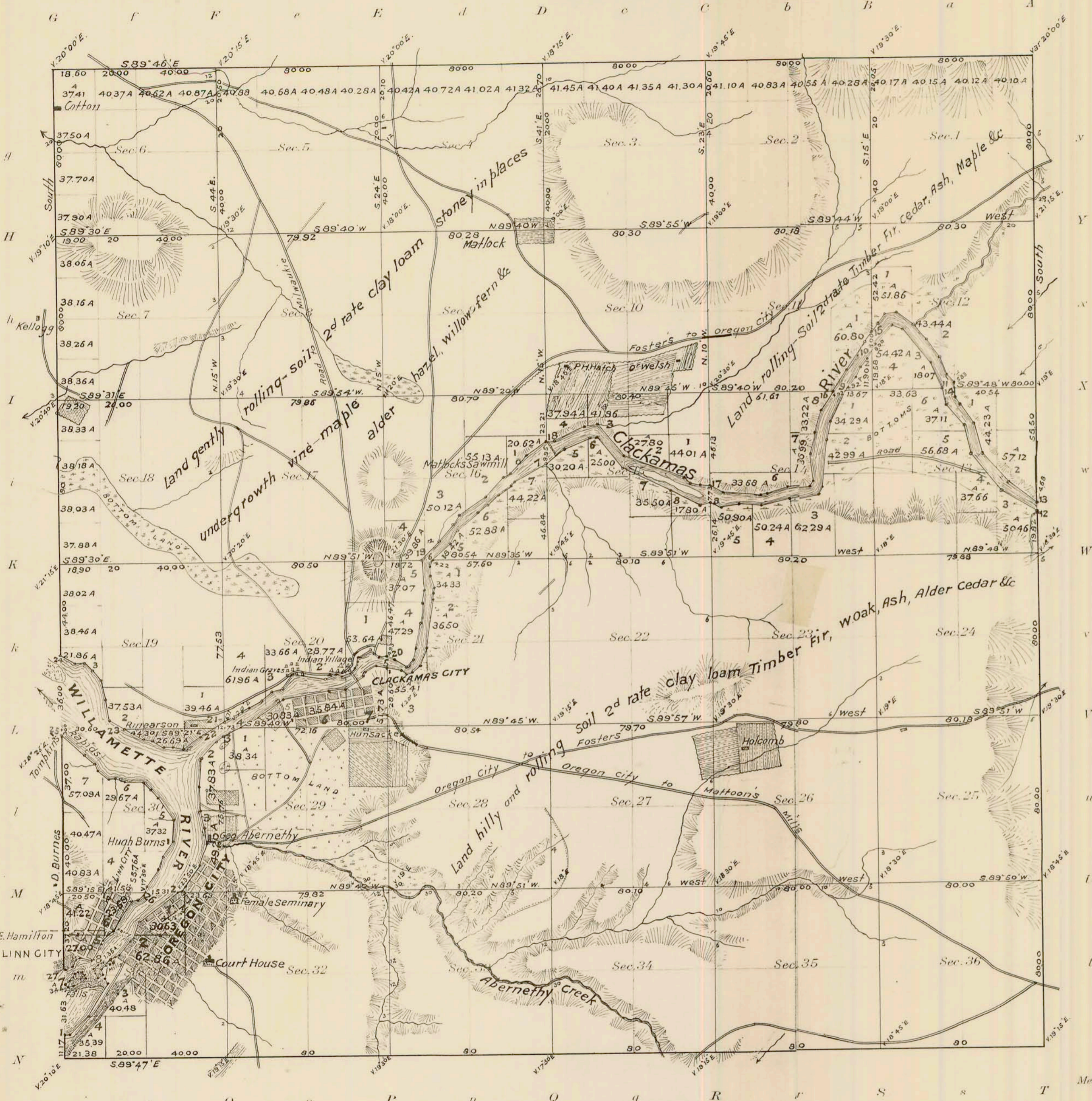


Township No. 2 South Range No. 2 East Willamette Meridian,



I certify this to be a correct copy of the original Plat on file in this Office.
 U.S. Surveyor General's Office
 Portland, Oregon, Jan. 12, 1915
 Edward G. Worth
 Surveyor General

Areas in Acres	
Public Land	
Indian Reservation	
Indian Allotments	
Mineral Claims	
Water Surface	
Total Area	

Scale 40 Chains to an inch
 Mean Magnetic Declination

Surveys Designated	By Whom Surveyed	Contract No.	Contract Date	Amount of Surveys			When Surveyed	When charged in the Surgen's Acct
				Mls.	chs.	lks.		
Township Lines	Joseph Hunt	13	March 25 th 1852	12	1	38	May 10 th 1852	2 ^d Quarter 1852
Subdivisions	Joseph Hunt	17	May 13 th 1852	80	19	67	June 30 th 1852	2 ^d Quarter 1852
				1	30	92		3 ^d Quarter 1852

The above map of Township No. 2 South Range No. 2 East of the Willamette Meridian Territory of Oregon is strictly conformable to the field notes of the survey thereof on file in this office, which have been examined and approved

Surveyor General's Office.
 Oregon City June 30th 1852

(signed) M. B. Preston
 Sur. Gen.