

TOWNSHIP N° 2 SOUTH RANGE N° 2 EAST WILLAMETTE MERIDIAN OREGON

Rec'd. with Sur. Gen'l's. letter of Ap'l. 15th., 1861

Aggregate Area of Publiclands 11911.62  
Private Surveys 10400.80

*Meanders of Claim 51*

N. 27° 00' E.	11.48 Chains
N. 52° " E.	5.08 "
N. 60° " E.	5.00 "
N. 36° 30' E.	4.91 "
N. 36° 30' E.	3.40 "
N. 30° " E.	7.30 "
N. 25° " E.	21.80 "
N. 2° 30' W.	8.40 "
N. 31° 30' W.	5.00 "
N. 49° 30' W.	3.60 "
N. 35° " W.	12.00 "
N. 75° " W.	5.20 "
West	5.82 "
N. 80° " W.	9.20 "
N. 55° " W.	2.10 "

*Meanders of Claim 65*

N. 48° 00' W.	3.66 Chains
N. 13° 30' W.	3.20 "
N. 36° 00' W.	1.60 "
N. 58° " W.	9.90 "
N. 53° " W.	12.80 "

*Meanders of Cl. 67 Robt. Moore beg. at N.E. Cor. left bank up stream*

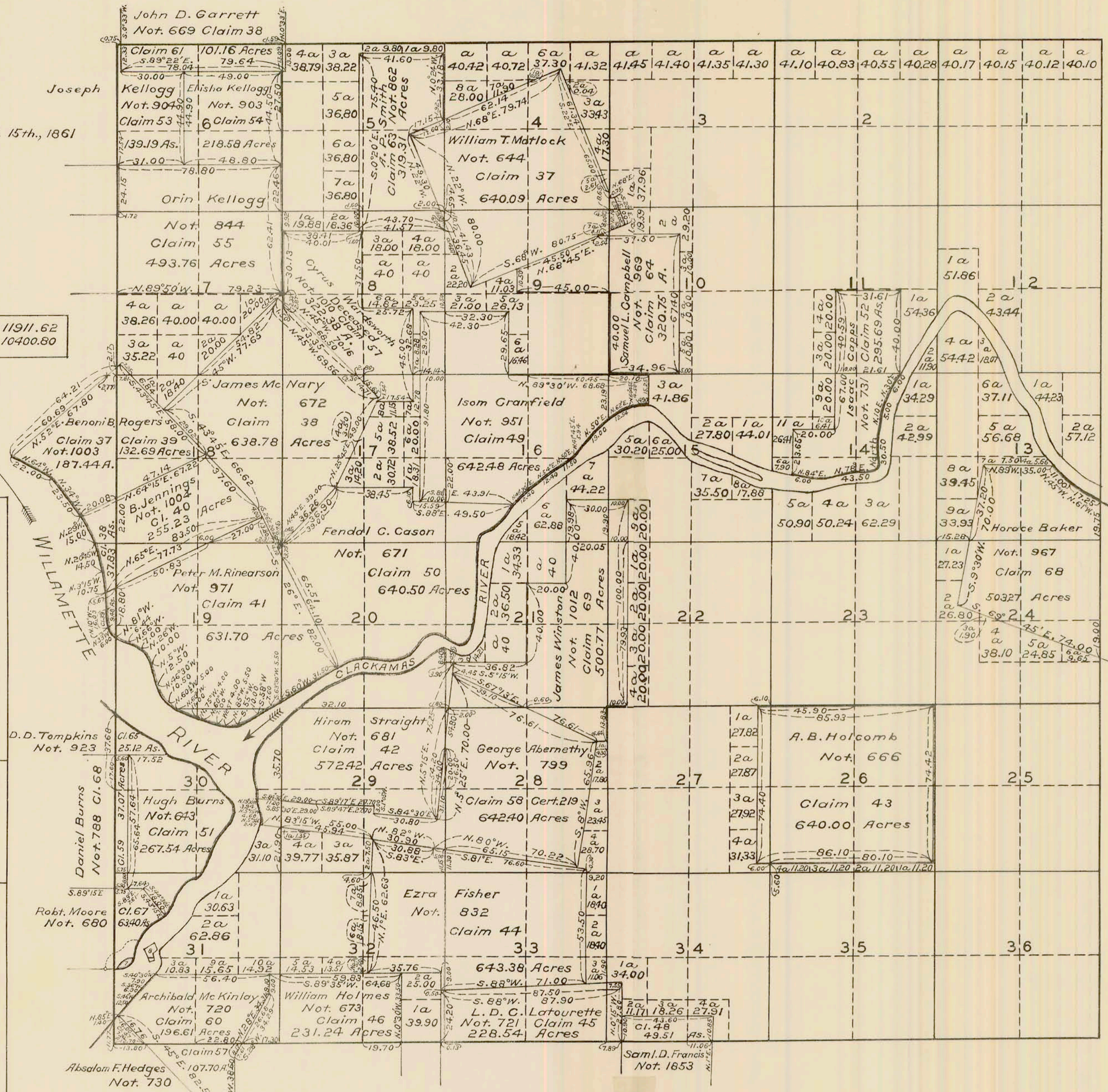
S. 17° 25' W.	2.50 Chains
S. 62° 30' W.	8.13 "
S. 31° 00' W.	4.17 "
S. 35° " W.	5.93 "
S. 55° " W.	1.20 "
South	5.38 "
S. 26° 45' W.	0.93 "
S. 47° 00' W.	4.28 "
S. 76° " W.	3.18 "
West	8.42 "
Cross Tp. line in River	

*Meanders of Claim 50*

S. 51° 30' W.	17.50 Chains
S. 3° 30' W.	5.00 "
S. 46° 00' W.	1.42 "
S. 3° " W.	25.88 "
S. 24° 15' W.	16.30 "
S. 44° 30' W.	10.84 "
N. 58° 30' W.	7.50 "
N. 89° 00' W.	10.50 "
S. 20° " W.	9.84 "
S. 78° 30' W.	1.87 "
S. 78° 00' W.	15.34 "
N. 79° 30' W.	12.50 "
S. 43° 00' W.	6.96 "
S. 44° " W.	4.41 "

*Meanders of Claim 42*

N. 85° 00' W.	5.40 Chains
S. 56° 30' W.	6.70 "
S. 20° 00' W.	2.90 "
S. 60° " W.	9.50 "
S. 84° " W.	7.20 "
S. 78° " W.	24.50 "
S. 58° " W.	24.00 "
S. 80° " W.	0.58 "
S. 61° 45' W.	8.90 "
S. 61° 30' W.	7.90 "
S. 26° 00' W.	9.50 "
S. 5° 30' W.	13.60 "
S. 10° 45' E.	13.60 "
S. 3° 30' E.	2.65 "



Public Survey Office,  
Portland, Oregon, December 1, 1931.  
I hereby certify this to be a correct copy of  
the original plat on file in this office.

Joseph A. Young  
Office Cadastral Engineer.

The above Map of the Survey of Claims in Township No. 2 South  
Range No. 2 East of the Willamette Meridian, Oregon is strictly  
conformable to the field notes of the Survey thereof on file in this  
Office, which have been examined and approved.

Surveyor General's Office,  
Eugene City April 13th., 1861.

(Signed)  
W. W. Chapman  
Surveyor Gen. of Oregon.